

For Research Use Only

RPB5 Polyclonal antibody

Catalog Number: 15217-1-AP **5 Publications**



Basic Information

Catalog Number: 15217-1-AP	GenBank Accession Number: BC004441	Purification Method: Antigen affinity purification
Size: 150ul, Concentration: 600 µg/ml by Nanodrop and 333 µg/ml by Bradford method using BSA as the standard;	GeneID (NCBI): 5434	Recommended Dilutions: WB 1:1000-1:6000 IP 0.5-4.0 ug for IP and 1:500-1:1000 for WB
Source: Rabbit	Full Name: polymerase (RNA) II (DNA directed) polypeptide E, 25kDa	IHC 1:50-1:500
Isotype: IgG	Calculated MW: 25 kDa	
Immunogen Catalog Number: AG7386	Observed MW: 23-25 kDa	

Applications

Tested Applications: IHC, IP, WB, ELISA	Positive Controls:
Cited Applications: WB	WB: A549 cells, HeLa cells, MCF-7 cells, HepG2 cells, rat liver tissue, rat spleen tissue, mouse spleen tissue, mouse liver tissue, Jurkat cells
Species Specificity: human, mouse, rat	IP: HeLa cells,
Cited Species: human, mouse	IHC: human breast cancer tissue,
Note-IHC: suggested antigen retrieval with TE buffer pH 9.0; (*) Alternatively, antigen retrieval may be performed with citrate buffer pH 6.0	

Background Information

DNA-dependent RNA polymerase catalyzes the transcription of DNA into RNA using the four ribonucleoside triphosphates as substrates. Common component of RNA polymerases I, II and III which synthesize ribosomal RNA precursors, mRNA precursors and many functional non-coding RNAs, and small RNAs, such as 5S rRNA and tRNAs, respectively. polymerase (RNA) II is the central component of the basal RNA polymerase II transcription machinery. Pols are composed of mobile elements that move relative to each other. In Pol II, POLR2E (Polymerase (RNA) II (DNA directed) polypeptide E) /RPB5 is part of the lower jaw surrounding the central large cleft and thought to grab the incoming DNA template. Seems to be the major component in this process. The observed molecular weight of POLR2E is about 25 kDa.

Notable Publications

Author	Pubmed ID	Journal	Application
Yuanjun Li	36113479	Mol Cell	WB
Yongpeng Jiang	36443871	Genome Biol	
Yuki Aoi	34480849	Mol Cell	WB

Storage

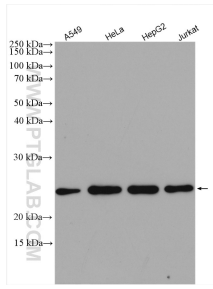
Storage:
Store at -20°C. Stable for one year after shipment.
Storage Buffer:
PBS with 0.02% sodium azide and 50% glycerol pH 7.3.
Aliquoting is unnecessary for -20°C storage

***** 20ul sizes contain 0.1% BSA**

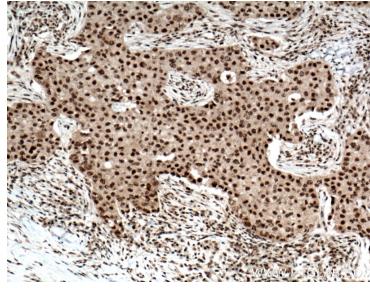
For technical support and original validation data for this product please contact:
T: 1 (888) 4PTGLAB (1-888-478-4522) (toll free in USA), or 1(312) 455-8498 (outside USA)
E: proteintech@ptglab.com
W: ptglab.com

This product is exclusively available under Proteintech Group brand and is not available to purchase from any other manufacturer.

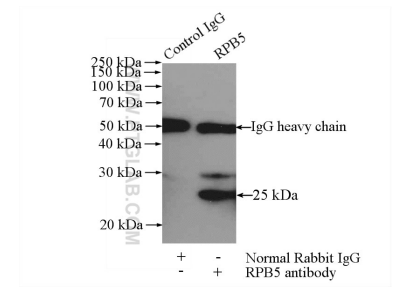
Selected Validation Data



Various lysates were subjected to SDS PAGE followed by western blot with 15217-1-AP (RPB5 antibody) at dilution of 1:3000 incubated at room temperature for 1.5 hours.



Immunohistochemical analysis of paraffin-embedded human breast cancer tissue slide using 15217-1-AP (RPB5 antibody) at dilution of 1:200 (under 10x lens. Heat mediated antigen retrieval with Tris-EDTA buffer (pH 9.0).



IP Result of anti-RPB5 (IP:15217-1-AP, 4ug; Detection:15217-1-AP 1:500) with HeLa cells lysate 880ug.