

For Research Use Only

YWHAH Polyclonal antibody

Catalog Number: 15222-1-AP

Featured Product

5 Publications



Basic Information

Catalog Number:

15222-1-AP

Size:

150ul, Concentration: 350 µg/ml by Nanodrop and 200 µg/ml by Bradford method using BSA as the standard;

Source:

Rabbit

Isotype:

IgG

Immunogen Catalog Number:

AG7435

GenBank Accession Number:

BC003047

GeneID (NCBI):

7533

Full Name:

tyrosine 3-monooxygenase/tryptophan 5-monooxygenase activation protein, eta polypeptide

Calculated MW:

28 kDa

Observed MW:

28 kDa

Purification Method:

Antigen affinity purification

Recommended Dilutions:

WB 1:500-1:2000

IP 0.5-4.0 µg for 1.0-3.0 mg of total protein lysate

IF 1:10-1:100

Applications

Tested Applications:

IF, IP, WB, ELISA

Cited Applications:

IF, IP, WB

Species Specificity:

human, mouse, rat

Cited Species:

human, rat, mouse

Positive Controls:

WB : human brain tissue, A431 cells, mouse brain tissue, NIH/3T3 cells, Raji cells

IP : NIH/3T3 cells,

IF : HeLa cells,

Background Information

YWHAH (also known as 14-3-3 eta) is a member of 14-3-3 proteins which were the first phosphoserine/phosphothreonine-binding proteins to be discovered. 14-3-3 family members interact with a wide spectrum of proteins and possess diverse functions. Mammals express seven distinct 14-3-3 isoforms (gamma, epsilon, beta, zeta, sigma, theta, tau) that form multiple homo- and hetero- dimers. 14-3-3 proteins display the highest expression levels in the brain, and have been implicated in several neurodegenerative diseases, including Alzheimer's disease and amyotrophic lateral sclerosis. This antibody was raised against the full-length YWHAH.

Notable Publications

Author	Pubmed ID	Journal	Application
Jiyi Huang	29175072	Eur J Pharmacol	WB
Jia Song	30606233	J Exp Clin Cancer Res	WB, IF, IP
Jiarui Liu	33987186	Front Cell Dev Biol	WB

Storage

Storage:

Store at -20°C. Stable for one year after shipment.

Storage Buffer:

PBS with 0.02% sodium azide and 50% glycerol pH 7.3.

Aliquoting is unnecessary for -20°C storage

*** 20ul sizes contain 0.1% BSA

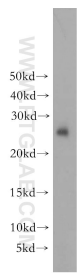
For technical support and original validation data for this product please contact:

T: 1 (888) 4PTGLAB (1-888-478-4522) (toll free in USA), or 1(312) 455-8498 (outside USA)

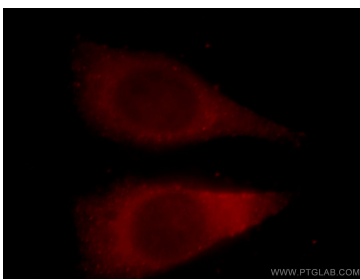
E: proteintech@ptglab.com
W: ptglab.com

This product is exclusively available under Proteintech Group brand and is not available to purchase from any other manufacturer.

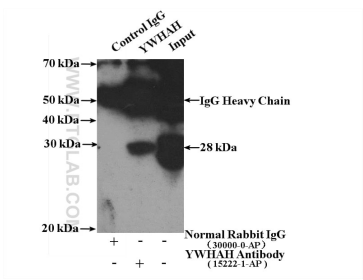
Selected Validation Data



human brain tissue were subjected to SDS PAGE followed by western blot with 15222-1-AP (YWHAH antibody) at dilution of 1:300 incubated at room temperature for 1.5 hours.



Immunofluorescent analysis of HeLa cells, using YWHAH antibody 15222-1-AP at 1:25 dilution and Rhodamine-labeled goat anti-rabbit IgG (red).



IP Result of anti-YWHAH (IP:15222-1-AP, 4ug; Detection:15222-1-AP 1:1000) with NIH/3T3 cells lysate 1600ug.