

For Research Use Only

# RPL21 Polyclonal antibody, PBS Only

Catalog Number: 15226-1-PBS



## Basic Information

### Catalog Number:

15226-1-PBS

### Size:

100ug, Concentration: 1 mg/ml by Nanodrop;

### Source:

Rabbit

### Isotype:

IgG

### Immunogen Catalog Number:

AG7444

### GenBank Accession Number:

BC001603

### GeneID (NCBI):

6144

### UNIPROT ID:

P46778

### Full Name:

ribosomal protein L21

### Calculated MW:

19 kDa

### Observed MW:

20-25 kDa

### Purification Method:

Antigen affinity purification

## Applications

### Tested Applications:

WB, IHC, IF/ICC, Indirect ELISA

### Species Specificity:

human, mouse, rat

## Storage

### Storage:

Store at -80°C.

### Storage Buffer:

PBS Only

For technical support and original validation data for this product please contact:

T: 1 (888) 4PTGLAB (1-888-478-4522) (toll free in USA), or 1(312) 455-8498 (outside USA)

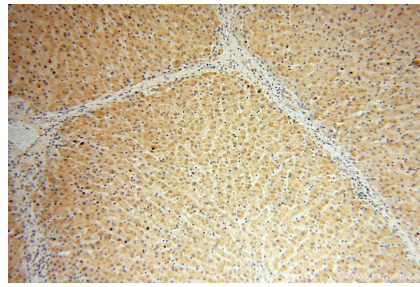
E: [proteintech@ptglab.com](mailto:proteintech@ptglab.com)  
W: [ptglab.com](http://ptglab.com)

This product is exclusively available under Proteintech Group brand and is not available to purchase from any other manufacturer.

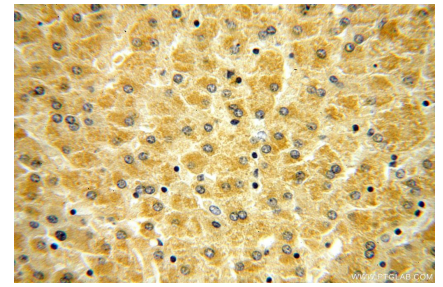
## Selected Validation Data



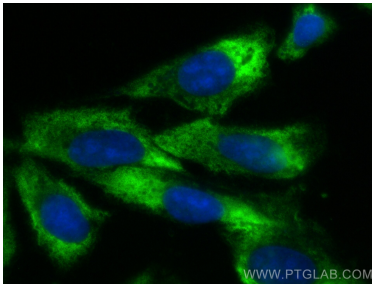
HepG2 cells were subjected to SDS PAGE followed by western blot with 15226-1-AP (RPL21 antibody) at dilution of 1:300 incubated at room temperature for 1.5 hours. This data was developed using the same antibody clone with 15226-1-PBS in a different storage buffer formulation.



Immunohistochemical analysis of paraffin-embedded human liver using 15226-1-AP (RPL21 antibody) at dilution of 1:100 (under 10x lens). This data was developed using the same antibody clone with 15226-1-PBS in a different storage buffer formulation.



Immunohistochemical analysis of paraffin-embedded human liver using 15226-1-AP (RPL21 antibody) at dilution of 1:100 (under 40x lens). This data was developed using the same antibody clone with 15226-1-PBS in a different storage buffer formulation.



Immunofluorescent analysis of (-20°C Ethanol) fixed U2OS cells using RPL21 antibody (15226-1-AP) at dilution of 1:400 and CoraLite®488-Conjugated Goat Anti-Rabbit IgG(H+L) (SA00013-2). This data was developed using the same antibody clone with 15226-1-PBS in a different storage buffer formulation.