

For Research Use Only

# ACP2 Polyclonal antibody

Catalog Number: 15236-1-AP



## Basic Information

**Catalog Number:**

15236-1-AP

**Size:**

150ul, Concentration: 550 ug/ml by Nanodrop and 300 ug/ml by Bradford method using BSA as the standard;

**Source:**

Rabbit

**Isotype:**

IgG

**Immunogen Catalog Number:**

AG7356

**GenBank Accession Number:**

BC003160

**GeneID (NCBI):**

53

**UNIPROT ID:**

P11117

**Full Name:**

acid phosphatase 2, lysosomal

**Calculated MW:**

48 kDa

**Observed MW:**

63 kDa, 52 kDa

**Purification Method:**

Antigen affinity purification

**Recommended Dilutions:**

WB 1:500-1:1000

IF/ICC 1:10-1:100

## Applications

**Tested Applications:**

WB, IF/ICC, ELISA

**Species Specificity:**

human, mouse, rat

**Positive Controls:**

**WB :** mouse kidney tissue, HepG2 cells, HL-60 cells, mouse brain tissue

**IF/ICC :** HepG2 cells,

## Storage

**Storage:**

Store at -20°C. Stable for one year after shipment.

**Storage Buffer:**

PBS with 0.02% sodium azide and 50% glycerol pH 7.3.

Aliquoting is unnecessary for -20°C storage

**\*\*\* 20ul sizes contain 0.1% BSA**

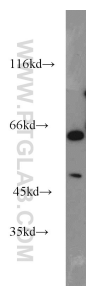
For technical support and original validation data for this product please contact:

T: 1 (888) 4PTGLAB (1-888-478-4522) (toll free in USA), or 1(312) 455-8498 (outside USA)

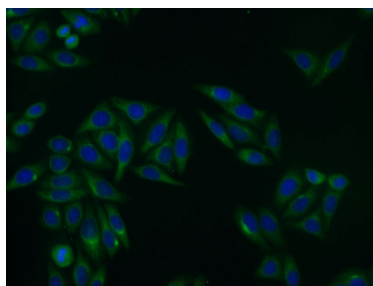
E: [proteintech@ptglab.com](mailto:proteintech@ptglab.com)  
W: [ptglab.com](http://ptglab.com)

This product is exclusively available under Proteintech Group brand and is not available to purchase from any other manufacturer.

## Selected Validation Data



mouse kidney tissue were subjected to SDS PAGE followed by western blot with 15236-1-AP (ACP2 antibody) at dilution of 1:500 incubated at room temperature for 1.5 hours.



Immunofluorescent analysis of HepG2 cells using 15236-1-AP (ACP2 antibody) at dilution of 1:25 and Alexa Fluor 488-conjugated Goat Anti-Rabbit IgG(H+L).