

For Research Use Only

# MAN1B1 Polyclonal antibody

Catalog Number: 15243-1-AP

Featured Product

1 Publications



## Basic Information

Catalog Number:

15243-1-AP

Size:

150ul, Concentration: 500 ug/ml by Nanodrop;

Source:

Rabbit

Isotype:

IgG

Immunogen Catalog Number:

AG7455

GenBank Accession Number:

BC002953

GeneID (NCBI):

11253

UNIPROT ID:

Q9UKM7

Full Name:

mannosidase, alpha, class 1B, member 1

Calculated MW:

80 kDa

Observed MW:

80 kDa

Purification Method:

Antigen affinity purification

Recommended Dilutions:

WB 1:1000-1:5000

## Applications

Tested Applications:

WB, ELISA

Cited Applications:

WB

Species Specificity:

human

Cited Species:

human

Positive Controls:

WB : HEK-293 cells, HCT 116 cells, HepG2 cells, LNCaP cells, U-87 MG cells

## Background Information

MAN1B1, also known as ERMAN1, MANA-ER, belongs to the glycosyl hydrolase 47 family. MAN1B1 is involved in glycoprotein quality control targeting of misfolded glycoproteins for degradation, specifically converting Man9GlcNAc to Man8GlcNAc isomer B. At high enzyme concentrations, it further trims the carbohydrates to Man5-6GlcNAc2 (PMID: 18003979). Mutations in MAN1B1 cause autosomal-recessive intellectual disability. This gene has been associated with Rafiq syndrome (PMID: 21763484).

## Notable Publications

Author	Pubmed ID	Journal	Application
Annemieke T van der Goot	29706535	Mol Cell	WB

## Storage

Storage:

Store at -20°C. Stable for one year after shipment.

Storage Buffer:

PBS with 0.02% sodium azide and 50% glycerol, pH7.3

Aliquoting is unnecessary for -20°C storage

\*\*\* 20ul sizes contain 0.1% BSA

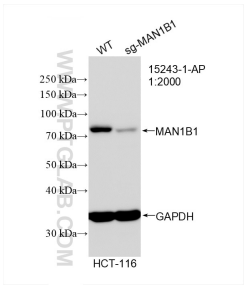
For technical support and original validation data for this product please contact:

T: 1 (888) 4PTGLAB (1-888-478-4522) (toll free in USA), or 1(312) 455-8498 (outside USA)

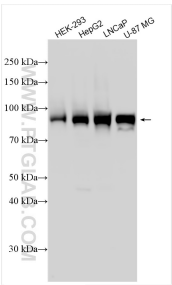
E: [proteintech@ptglab.com](mailto:proteintech@ptglab.com)  
W: [ptglab.com](http://ptglab.com)

This product is exclusively available under Proteintech Group brand and is not available to purchase from any other manufacturer.

Selected Validation Data



WB result of MAN1B1 antibody (15243-1-AP; 1:2000; room temperature for 1.5 hours) with wild-type and sg-MAN1B1 transfected HCT-116 cells.



Various lysates were subjected to SDS PAGE followed by western blot with 15243-1-AP (MAN1B1 antibody) at dilution of 1:2500 incubated at room temperature for 1.5 hours.