

For Research Use Only

GEMIN8 Polyclonal antibody

Catalog Number: 15251-1-AP

1 Publications



Basic Information

Catalog Number:

15251-1-AP

Size:

150ul, Concentration: 300 ug/ml by Nanodrop and 273 ug/ml by Bradford method using BSA as the standard;

Source:

Rabbit

Isotype:

IgG

Immunogen Catalog Number:

AG6774

GenBank Accession Number:

BC003607

GeneID (NCBI):

54960

UNIPROT ID:

Q9NWZ8

Full Name:

gem (nuclear organelle) associated protein 8

Calculated MW:

29 kDa

Observed MW:

32 kDa

Purification Method:

Antigen affinity purification

Recommended Dilutions:

WB 1:1000-1:4000

IP 0.5-4.0 ug for 1.0-3.0 mg of total protein lysate

IHC 1:20-1:200

IF/ICC 1:20-1:200

Applications

Tested Applications:

WB, IHC, IF/ICC, IP, ELISA

Cited Applications:

WB

Species Specificity:

human

Cited Species:

human

Note-IHC: suggested antigen retrieval with TE buffer pH 9.0; (*) Alternatively, antigen retrieval may be performed with citrate buffer pH 6.0

Positive Controls:

WB : HEK-293 cells, HeLa cells

IP : HepG2 cells,

IHC : human liver cancer tissue,

IF/ICC : HepG2 cells,

Background Information

GEMIN8, also named as FAM51A1 and Gemin-8, is associated with the SMN complex and is localized in the cytoplasm and in the nucleus, where it is highly concentrated in Gems. Gemin6, Gemin7, and Unrip form a stable cytoplasmic complex whose association with SMN requires Gemin8. Gemin8 binds directly to SMN and mediates its interaction with the Gemin6/Gemin7 heterodimer. This antibody recognize GEMIN8(28-32kd) only.

Notable Publications

Author	Pubmed ID	Journal	Application
Anne-Sophie Gribbling-Burrer	28115638	Nucleic Acids Res	WB

Storage

Storage:

Store at -20°C. Stable for one year after shipment.

Storage Buffer:

PBS with 0.02% sodium azide and 50% glycerol pH 7.3.

Aliquoting is unnecessary for -20°C storage

*** 20ul sizes contain 0.1% BSA

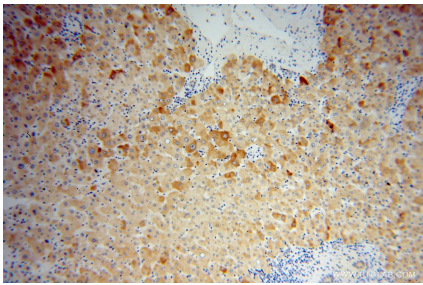
For technical support and original validation data for this product please contact:

T: 1 (888) 4PTGLAB (1-888-478-4522) (toll free in USA), or 1(312) 455-8498 (outside USA)

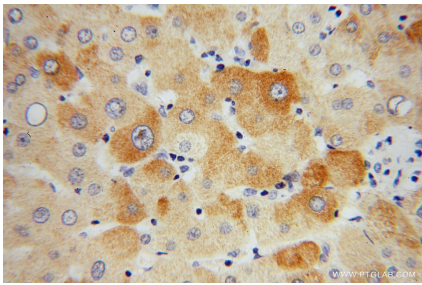
E: proteintech@ptglab.com
W: ptglab.com

This product is exclusively available under Proteintech Group brand and is not available to purchase from any other manufacturer.

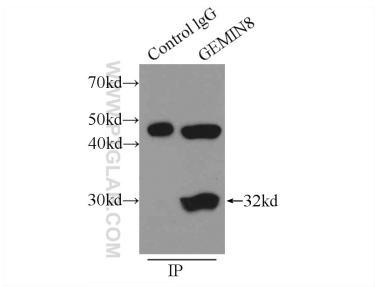
Selected Validation Data



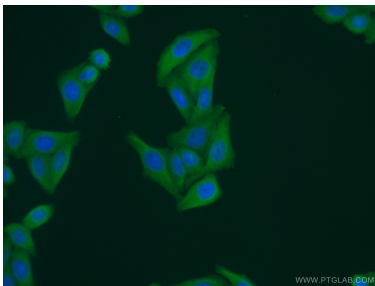
Immunohistochemical analysis of paraffin-embedded human liver cancer using 15251-1-AP (GEMIN8 antibody) at dilution of 1:50 (under 10x lens).



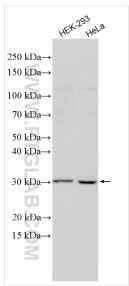
Immunohistochemical analysis of paraffin-embedded human liver cancer using 15251-1-AP (GEMIN8 antibody) at dilution of 1:50 (under 40x lens).



IP result of anti-GEMIN8 (IP:15251-1-AP, 3ug; Detection:15251-1-AP 1:400) with HepG2 cells lysate 1720ug.



Immunofluorescent analysis of (-20°C Ethanol) fixed HepG2 cells using 15251-1-AP (GEMIN8 antibody) at dilution of 1:50 and Alexa Fluor 488-conjugated AffiniPure Goat Anti-Rabbit IgG(H+L).



Various lysates were subjected to SDS PAGE followed by western blot with 15251-1-AP (GEMIN8 antibody) at dilution of 1:2000 incubated at room temperature for 1.5 hours.