

For Research Use Only

MAGED2 Polyclonal antibody

Catalog Number: 15252-1-AP

Featured Product

6 Publications



Basic Information

Catalog Number:
15252-1-AP

Size:
150ul, Concentration: 650 µg/ml by Nanodrop and 300 µg/ml by Bradford method using BSA as the standard;

Source:
Rabbit

Isotype:
IgG

Immunogen Catalog Number:
AG6828

GenBank Accession Number:
BC000304

GeneID (NCBI):
10916

Full Name:
melanoma antigen family D, 2

Calculated MW:
65 kDa

Observed MW:
65 kDa

Purification Method:
Antigen affinity purification

Recommended Dilutions:
WB 1:1000-1:4000
IP 0.5-4.0 ug for IP and 1:500-1:2000 for WB
IHC 1:50-1:500
IF 1:50-1:500

Applications

Tested Applications:
IF, IHC, IP, WB, ELISA

Cited Applications:
IF, IHC, IP, WB

Species Specificity:
human, mouse, rat

Cited Species:
human, mouse

Note-IHC: suggested antigen retrieval with TE buffer pH 9.0; (*) Alternatively, antigen retrieval may be performed with citrate buffer pH 6.0

Positive Controls:

WB: HEK-293 cells, HepG2 cells, A431 cells, MCF-7 cells, mouse liver tissue, rat liver tissue

IP: HepG2 cells,

IHC: human breast cancer tissue,

IF: MCF-7 cells,

Background Information

Notable Publications

Author	Pubmed ID	Journal	Application
Ewan K S McRae	31653714	RNA	WB
Charlotte Trussart	29371029	Biochem Pharmacol	WB
Céline Pirlot	26705694	Biochim Biophys Acta	WB, IF

Storage

Storage:

Store at -20°C. Stable for one year after shipment.

Storage Buffer:

PBS with 0.02% sodium azide and 50% glycerol pH 7.3.

Aliquoting is unnecessary for -20°C storage

*** 20ul sizes contain 0.1% BSA

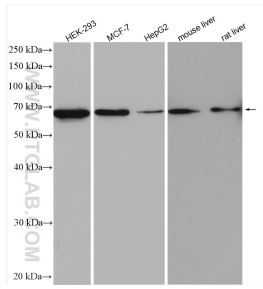
For technical support and original validation data for this product please contact:

T: 1 (888) 4PTGLAB (1-888-478-4522) (toll free in USA), or 1(312) 455-8498 (outside USA)

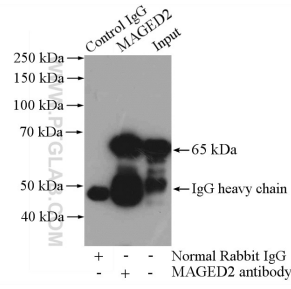
E: proteintech@ptglab.com
W: ptglab.com

This product is exclusively available under Proteintech Group brand and is not available to purchase from any other manufacturer.

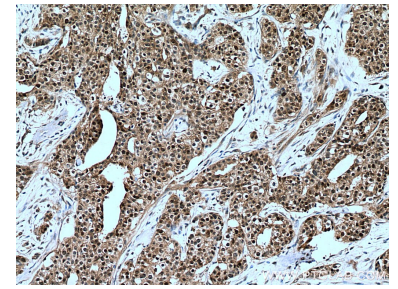
Selected Validation Data



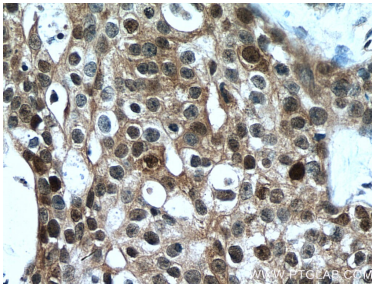
Various lysates were subjected to SDS PAGE followed by western blot with 15252-1-AP (MAGED2 antibody) at dilution of 1:2000 incubated at room temperature for 1.5 hours.



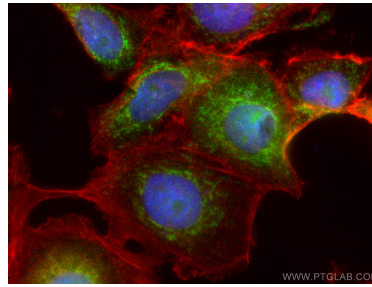
IP Result of anti-MAGED2 (IP:15252-1-AP, 4 μ g; Detection:15252-1-AP 1:1000) with HepG2 cells lysate 3200 μ g.



Immunohistochemical analysis of paraffin-embedded human breast cancer tissue slide using 15252-1-AP (MAGED2 antibody) at dilution of 1:200 (under 10x lens). Heat mediated antigen retrieval with Tris-EDTA buffer (pH 9.0).



Immunohistochemical analysis of paraffin-embedded human breast cancer tissue slide using 15252-1-AP (MAGED2 antibody) at dilution of 1:200 (under 40x lens). Heat mediated antigen retrieval with Tris-EDTA buffer (pH 9.0).



Immunofluorescent analysis of (4% PFA) fixed MCF-7 cells using MAGED2 antibody (15252-1-AP) at dilution of 1:200 and CoraLite®488-Conjugated AffiniPure Goat Anti-Rabbit IgG(H+L), F-actin was stained using CoraLite®594-phalloidin (red) and DNA was stained by DAPI (blue).