

For Research Use Only

# GPR162 Polyclonal antibody

Catalog Number: 15254-1-AP

1 Publications



## Basic Information

Catalog Number:

15254-1-AP

Size:

150ul, Concentration: 350 ug/ml by Nanodrop and 253 ug/ml by Bradford method using BSA as the standard;

Source:

Rabbit

Isotype:

IgG

Immunogen Catalog Number:

AG7011

GenBank Accession Number:

BC002353

GeneID (NCBI):

27239

UNIPROT ID:

Q16538

Full Name:

G protein-coupled receptor 162

Calculated MW:

64 kDa

Observed MW:

33 kDa, 64 kDa

Purification Method:

Antigen affinity purification

Recommended Dilutions:

WB 1:500-1:2000

## Applications

Tested Applications:

WB, ELISA

Cited Applications:

WB, IHC

Species Specificity:

human

Cited Species:

human

Positive Controls:

WB : SH-SY5Y cells, HeLa cells, human brain tissue, Y79 cells

## Notable Publications

Author	Pubmed ID	Journal	Application
Zhen Guo	38444036	Acta Neuropathol Commun	WB,IHC

## Storage

Storage:

Store at -20°C. Stable for one year after shipment.

Storage Buffer:

PBS with 0.02% sodium azide and 50% glycerol pH 7.3.

Aliquoting is unnecessary for -20°C storage

\*\*\* 20ul sizes contain 0.1% BSA

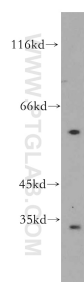
For technical support and original validation data for this product please contact:

T: 1 (888) 4PTGLAB (1-888-478-4522) (toll free in USA), or 1(312) 455-8498 (outside USA)

E: [proteintech@ptglab.com](mailto:proteintech@ptglab.com)  
W: [ptglab.com](http://ptglab.com)

This product is exclusively available under Proteintech Group brand and is not available to purchase from any other manufacturer.

## Selected Validation Data



SH-SY5Y cells were subjected to SDS PAGE followed by western blot with 15254-1-AP (GPR162 antibody) at dilution of 1:500 incubated at room temperature for 1.5 hours.