

For Research Use Only

# GSG1 Polyclonal antibody

Catalog Number: 15258-1-AP



## Basic Information

Catalog Number:

15258-1-AP

Size:

150ul , Concentration: 450 ug/ml by Nanodrop;

Source:

Rabbit

Isotype:

IgG

Immunogen Catalog Number:

AG7200

GenBank Accession Number:

BC001796

GeneID (NCBI):

83445

UNIPROT ID:

Q2KHT4

Full Name:

germ cell associated 1

Calculated MW:

37 kDa

Observed MW:

39 kDa

Purification Method:

Antigen affinity purification

Recommended Dilutions:

WB 1:500-1:1000

IF-P 1:50-1:500

## Applications

Tested Applications:

WB, IF-P, ELISA

Species Specificity:

human, mouse

Positive Controls:

WB : mouse testis tissue,

IF-P : mouse testis tissue,

## Background Information

GSG1 causes the redistribution of PAPOLB from the cytosol to the endoplasmic reticulum. It has eight isoforms with MW 31-33 kDa and 36-40 kDa.

## Storage

Storage:

Store at -20°C. Stable for one year after shipment.

Storage Buffer:

PBS with 0.02% sodium azide and 50% glycerol pH 7.3.

Aliquoting is unnecessary for -20°C storage

\*\*\* 20ul sizes contain 0.1% BSA

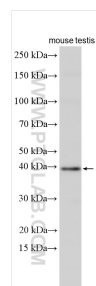
For technical support and original validation data for this product please contact:

T: 1 (888) 4PTGLAB (1-888-478-4522) (toll free in USA), or 1(312) 455-8498 (outside USA)

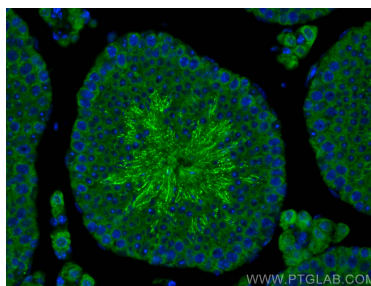
E: [proteintech@ptglab.com](mailto:proteintech@ptglab.com)  
W: [ptglab.com](http://ptglab.com)

This product is exclusively available under Proteintech Group brand and is not available to purchase from any other manufacturer.

## Selected Validation Data



mouse testis tissue were subjected to SDS PAGE followed by western blot with 15258-1-AP (GSG1 antibody) at dilution of 1:800 incubated at room temperature for 1.5 hours.



Immunofluorescent analysis of (4% PFA) fixed mouse testis tissue using GSG1 antibody (15258-1-AP) at dilution of 1:200 and CoraLite® 488-Conjugated Goat Anti-Rabbit IgG(H+L).