

For Research Use Only

# PSMD13 Polyclonal antibody

Catalog Number: 15261-1-AP

Featured Product

5 Publications



## Basic Information

### Catalog Number:

15261-1-AP

### Size:

150ul, Concentration: 260 ug/ml by Nanodrop and 167 ug/ml by Bradford method using BSA as the standard;

### Source:

Rabbit

### Isotype:

IgG

### Immunogen Catalog Number:

AG7257

### GenBank Accession Number:

BC001100

### GeneID (NCBI):

5719

### UNIPROT ID:

Q9UNM6

### Full Name:

proteasome (prosome, macropain)  
26S subunit, non-ATPase, 13

### Calculated MW:

43 kDa

### Observed MW:

43 kDa

### Purification Method:

Antigen affinity purification

### Recommended Dilutions:

WB 1:500-1:2000

IP 0.5-4.0 ug for 1.0-3.0 mg of total protein lysate

IHC 1:50-1:500

IF/ICC 1:10-1:100

## Applications

### Tested Applications:

WB, IHC, IF/ICC, IP, ELISA

### Cited Applications:

WB, IHC

### Species Specificity:

human

### Cited Species:

mouse

**Note-IHC: suggested antigen retrieval with TE buffer pH 9.0; (\*) Alternatively, antigen retrieval may be performed with citrate buffer pH 6.0**

### Positive Controls:

**WB** : HEK-293 cells, HepG2 cells, HeLa cells, Jurkat cells, Y79 cells

**IP** : HEK-293T cells,

**IHC** : human kidney tissue, human colon cancer tissue

**IF/ICC** : HeLa cells,

## Notable Publications

Author	Pubmed ID	Journal	Application
Songhua Li	27225770	J Neurosci	WB
Songhua Li	24849605	J Biol Chem	WB, IHC
Jennifer E Gilda	38767572	J Cell Biol	WB

## Storage

### Storage:

Store at -20°C. Stable for one year after shipment.

### Storage Buffer:

PBS with 0.02% sodium azide and 50% glycerol pH 7.3.

Aliquoting is unnecessary for -20°C storage

\*\*\* 20ul sizes contain 0.1% BSA

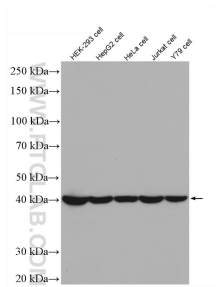
For technical support and original validation data for this product please contact:

T: 1 (888) 4PTGLAB (1-888-478-4522) (toll free in USA), or 1(312) 455-8498 (outside USA)

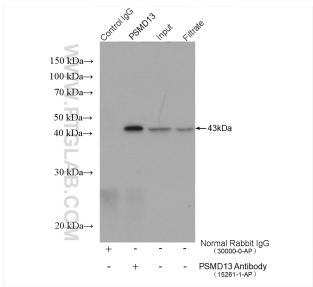
E: [proteintech@ptglab.com](mailto:proteintech@ptglab.com)  
W: [ptglab.com](http://ptglab.com)

This product is exclusively available under Proteintech Group brand and is not available to purchase from any other manufacturer.

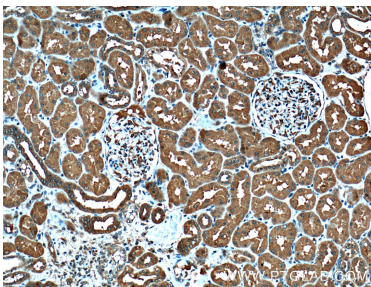
Selected Validation Data



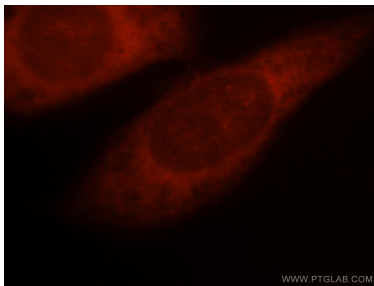
Various lysates were subjected to SDS PAGE followed by western blot with 15261-1-AP (PSMD13 antibody) at dilution of 1:1000 incubated at room temperature for 1.5 hours.



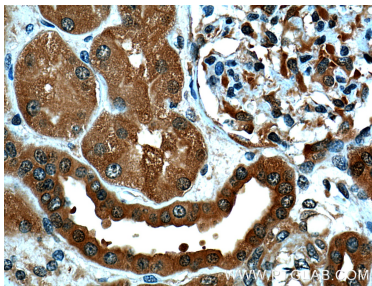
IP result of anti-PSMD13 (IP:15261-1-AP, 4ug; Detection:15261-1-AP 1:1000) with HEK-293T cells lysate 1200 ug.



Immunohistochemical analysis of paraffin-embedded human kidney tissue slide using 15261-1-AP (PSMD13 Antibody) at dilution of 1:200 (under 10x lens).



Immunofluorescent analysis of Hela cells, using PSMD13 antibody 15261-1-AP at 1:25 dilution and Rhodamine-labeled goat anti-rabbit IgG (red).



Immunohistochemical analysis of paraffin-embedded human kidney tissue slide using 15261-1-AP (PSMD13 Antibody) at dilution of 1:200 (under 40x lens).