

For Research Use Only

# KIF1B Polyclonal antibody

Catalog Number: 15263-1-AP

Featured Product

5 Publications



## Basic Information

**Catalog Number:**  
15263-1-AP

**Size:**  
150ul, Concentration: 360 µg/ml by Bradford method using BSA as the standard;

**Source:**  
Rabbit

**Isotype:**  
IgG

**Immunogen Catalog Number:**  
AG7263

**GenBank Accession Number:**  
BC001415

**GeneID (NCBI):**  
23095

**Full Name:**  
kinesin family member 1B

**Calculated MW:**  
204 kDa

**Observed MW:**  
199 kDa, 204 kDa

**Purification Method:**  
Antigen affinity purification

**Recommended Dilutions:**  
WB 1:500-1:1000  
IP 0.5-4.0 ug for IP and 1:500-1:1000 for WB  
IHC 1:50-1:500

## Applications

**Tested Applications:**  
IHC, IP, WB, ELISA

**Cited Applications:**  
IF, IP, WB

**Species Specificity:**  
human, mouse, rat

**Cited Species:**  
human, rat, mouse

**Note-IHC: suggested antigen retrieval with TE buffer pH 9.0; (\*) Alternatively, antigen retrieval may be performed with citrate buffer pH 6.0**

**Positive Controls:**

**WB:** HeLa cells, HEK-293 cells

**IP:** HeLa cells,

**IHC:** human liver cancer tissue, human skeletal muscle tissue, mouse brain tissue

## Background Information

### Notable Publications

Author	Pubmed ID	Journal	Application
Yiyuan Kang	34772551	J Hazard Mater	IP
Kelsey Michelle Wells	35587649	Elife	IF
Vinicius Toledo Ribas	33637688	Cell Death Dis	WB

## Storage

**Storage:**

Store at -20°C. Stable for one year after shipment.

**Storage Buffer:**

PBS with 0.02% sodium azide and 50% glycerol pH 7.3.

Aliquoting is unnecessary for -20°C storage

\*\*\* 20ul sizes contain 0.1% BSA

For technical support and original validation data for this product please contact:

T: 1 (888) 4PTGLAB (1-888-478-4522) (toll free in USA), or 1(312) 455-8498 (outside USA)

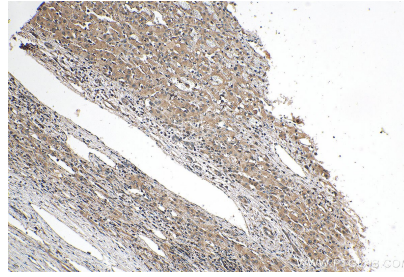
E: proteintech@ptglab.com  
W: ptglab.com

This product is exclusively available under Proteintech Group brand and is not available to purchase from any other manufacturer.

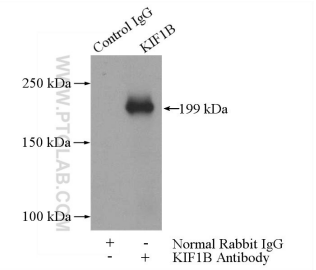
## Selected Validation Data



HeLa cells were subjected to SDS PAGE followed by western blot with 15263-1-AP (KIF1B antibody) at dilution of 1:500 incubated at room temperature for 1.5 hours.



Immunohistochemical analysis of paraffin-embedded human liver cancer tissue slide using 15263-1-AP (KIF1B antibody) at dilution of 1:200 (under 10x lens). Heat mediated antigen retrieval with Tris-EDTA buffer (pH 9.0).



IP Result of anti-KIF1B (IP:15263-1-AP, 5ug; Detection:15263-1-AP 1:700) with HeLa cells lysate 2000ug.