

For Research Use Only

Adenylosuccinate lyase Polyclonal antibody



Catalog Number: 15264-1-AP

3 Publications

Basic Information

Catalog Number: 15264-1-AP	GenBank Accession Number: BC000253	Purification Method: Antigen affinity purification
Size: 150ul , Concentration: 350 µg/ml by Nanodrop;	GeneID (NCBI): 158	Recommended Dilutions: WB 1:1000-1:6000 IHC 1:20-1:200 IF 1:10-1:100
Source: Rabbit	Full Name: adenylosuccinate lyase	
Isotype: IgG	Calculated MW: 55 kDa	
Immunogen Catalog Number: AG7332	Observed MW: 55 kDa	

Applications

Tested Applications:
FC, IF, IHC, WB, ELISA

Cited Applications:
IHC, WB

Species Specificity:
human, mouse, rat

Cited Species:
human

Positive Controls:

WB : HeLa cells, HepG2 cells, NIH/3T3 cells, RAW264.7 cells

IHC : human liver cancer tissue,

IF : HeLa cells,

Note-IHC: suggested antigen retrieval with TE buffer pH 9.0; (*) Alternatively, antigen retrieval may be performed with citrate buffer pH 6.0

Background Information

ADSL(adenylosuccinate lyase) is also named as AMPS, ASase, ASL and belongs to the lyase 1 family. It is an enzyme involved in 2 pathways of purine nucleotide metabolism and catalyzes cleavage of succinyl groups to yield fumarate(PMID:18524658). Defects in ADSL are the cause of adenylosuccinase deficiency (ADSL deficiency). In humans, mutations in ADSL lead to an inborn error of metabolism originally characterized by developmental delay, often with autistic features(PMID:20884265)..The ADSL enzymatic activity is reduced in lymphocytes and red blood cells of the patient with severe psychomotor retardation(PMID:9545543). It has 2 isoforms produced by alternative splicing.

Notable Publications

Author	Pubmed ID	Journal	Application
Eunus S Ali	32485148	Mol Cell	WB
Xiaoting Chen	33869182	Front Cell Dev Biol	WB, IHC
Xiang Jiang	37419985	Cell Death Differ	WB

Storage

Storage:

Store at -20°C. Stable for one year after shipment.

Storage Buffer:

PBS with 0.02% sodium azide and 50% glycerol pH 7.3.

Aliquoting is unnecessary for -20°C storage

*** 20ul sizes contain 0.1% BSA

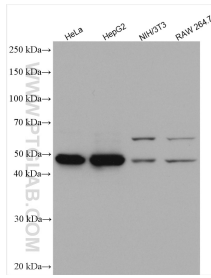
For technical support and original validation data for this product please contact:

T: 1 (888) 4PTGLAB (1-888-478-4522) (toll free in USA), or 1(312) 455-8498 (outside USA)

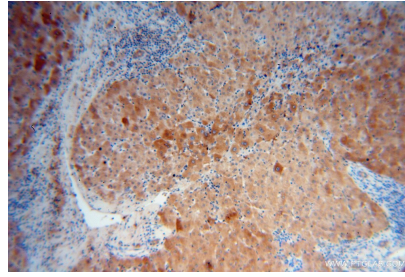
E: proteintech@ptglab.com
W: ptglab.com

This product is exclusively available under Proteintech Group brand and is not available to purchase from any other manufacturer.

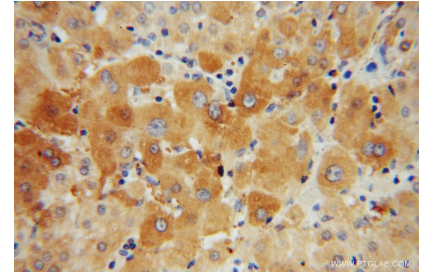
Selected Validation Data



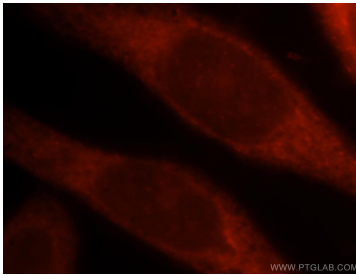
Various lysates were subjected to SDS PAGE followed by western blot with 15264-1-AP (Adenylosuccinate lyase antibody) at dilution of 1:3000 incubated at room temperature for 1.5 hours.



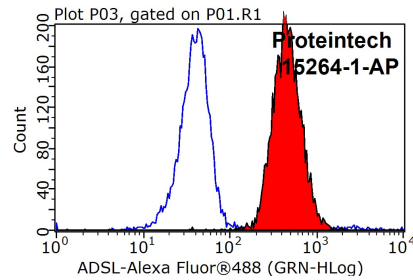
Immunohistochemical analysis of paraffin-embedded human liver cancer using 15264-1-AP (Adenylosuccinate lyase antibody) at dilution of 1:50 (under 10x lens).



Immunohistochemical analysis of paraffin-embedded human liver cancer using 15264-1-AP (Adenylosuccinate lyase antibody) at dilution of 1:50 (under 40x lens).



Immunofluorescent analysis of HeLa cells, using ADSL antibody 15264-1-AP at 1:25 dilution and Rhodamine-labeled goat anti-rabbit IgG (red).



1X10⁶ HeLa cells were stained with 0.2ug Adenylosuccinate lyase antibody (15264-1-AP, red) and control antibody (blue). Fixed with 90% MeOH blocked with 3% BSA (30 min). Alexa Fluor 488-conjugated AffiniPure Goat Anti-Rabbit IgG(H+L) with dilution 1:1000.