

For Research Use Only

RPS6KB2 Polyclonal antibody, PBS Only

Catalog Number:15268-1-PBS



Basic Information

Catalog Number: 15268-1-PBS	GenBank Accession Number: BC000094	Purification Method: Antigen affinity purification
Size: 100ug , Concentration: 1 mg/ml by Nanodrop;	GeneID (NCBI): 6199	
Source: Rabbit	UNIPROT ID: Q9UBS0	
Isotype: IgG	Full Name: ribosomal protein S6 kinase, 70kDa, polypeptide 2	
Immunogen Catalog Number: AG7371	Calculated MW: 53 kDa	
	Observed MW: 54 kDa	

Applications

Tested Applications:
WB, IHC, IF/ICC, IP, Indirect ELISA

Species Specificity:
human, mouse, rat

Background Information

RPS6KB2(ribosomal protein S6 kinase beta-2) is also named as 70 kDa ribosomal protein S6 kinase 2(P70S6K2),Serine/threonine-protein kinase 14B(STK14B) and belongs to the protein kinase superfamily. It is activated by mitogenic stimuli, including growth factors, cytokines, and phorbol esters. The activated enzyme phosphorylates several serine residues in the C terminus of ribosomal protein S6(PMID:9878560).

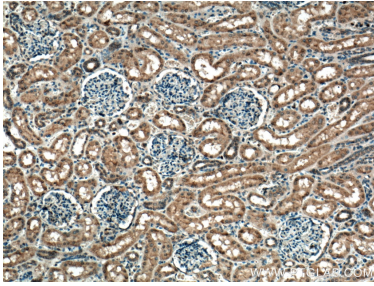
Storage

Storage:
Store at -80°C.
Storage Buffer:
PBS only, pH7.3

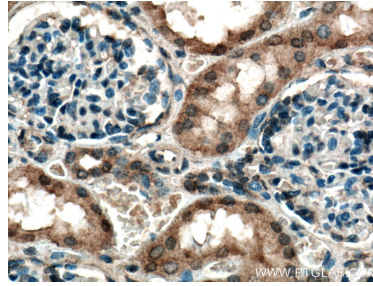
For technical support and original validation data for this product please contact:
T: 1 (888) 4PTGLAB (1-888-478-4522) (toll free in USA), or 1(312) 455-8498 (outside USA)
E: proteintech@ptglab.com
W: ptglab.com

This product is exclusively available under Proteintech Group brand and is not available to purchase from any other manufacturer.

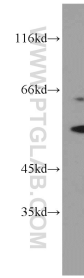
Selected Validation Data



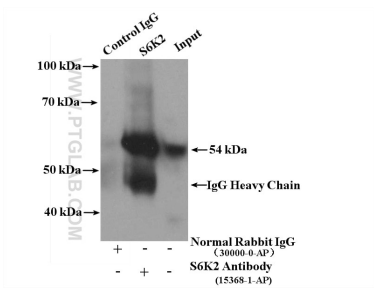
Immunohistochemical analysis of paraffin-embedded human kidney tissue slide using 15268-1-AP (S6K2 antibody) at dilution of 1:200 (under 10x lens). Heat mediated antigen retrieval with Tris-EDTA buffer (pH 9.0). This data was developed using the same antibody clone with 15268-1-PBS in a different storage buffer formulation.



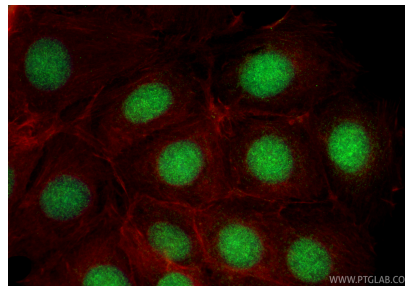
Immunohistochemical analysis of paraffin-embedded human kidney tissue slide using 15268-1-AP (S6K2 antibody) at dilution of 1:200 (under 40x lens). Heat mediated antigen retrieval with Tris-EDTA buffer (pH 9.0). This data was developed using the same antibody clone with 15268-1-PBS in a different storage buffer formulation.



MCF7 cells were subjected to SDS PAGE followed by western blot with 15268-1-AP (S6K2 antibody) at dilution of 1:1500 incubated at room temperature for 1.5 hours. This data was developed using the same antibody clone with 15268-1-PBS in a different storage buffer formulation.



IP result of anti-S6K2 (IP:15268-1-AP, 4ug; Detection:15268-1-AP 1:1000) with MCF-7 cells lysate 2800ug. This data was developed using the same antibody clone with 15268-1-PBS in a different storage buffer formulation.



Immunofluorescent analysis of (4% PFA) fixed MCF-7 cells using RPS6KB2 antibody (15268-1-AP) at dilution of 1:100 and CoraLite®488-Conjugated Goat Anti-Rabbit IgG(H+L) (SA00013-2), CL594-Phalloidin (red). This data was developed using the same antibody clone with 15268-1-PBS in a different storage buffer formulation.