

For Research Use Only

ATP6V1E1 Polyclonal antibody

Catalog Number: 15280-1-AP

Featured Product

7 Publications



Basic Information

Catalog Number:

15280-1-AP

Size:

150ul, Concentration: 600 µg/ml by Nanodrop and 333 µg/ml by Bradford method using BSA as the standard;

Source:

Rabbit

Isotype:

IgG

Immunogen Catalog Number:

AG7399

GenBank Accession Number:

BC004443

GeneID (NCBI):

529

Full Name:

ATPase, H⁺ transporting, lysosomal 31kDa, V1 subunit E1

Calculated MW:

26 kDa

Observed MW:

31 kDa

Purification Method:

Antigen affinity purification

Recommended Dilutions:

WB 1:1000-1:6000

IP 0.5-4.0 µg for 1.0-3.0 mg of total protein lysate

IHC 1:250-1:1000

Applications

Tested Applications:

IHC, IP, WB, ELISA

Cited Applications:

IF, IHC, WB

Species Specificity:

human, mouse, rat

Cited Species:

human, mouse, pig

Note-IHC: suggested antigen retrieval with TE buffer pH 9.0; (*) Alternatively, antigen retrieval may be performed with citrate buffer pH 6.0

Positive Controls:

WB : HeLa cells, human liver tissue, human brain tissue, mouse brain tissue, HEK-293 cells

IP : mouse brain tissue,

IHC : mouse testis tissue, human testis tissue

Background Information

ATP6V1E1, also named as ATP6E, ATP6E2 and p31, belongs to the V-ATPase E subunit family. It is a subunit of the peripheral V1 complex of vacuolar ATPase essential for assembly or catalytic function. V-ATPase is responsible for acidifying a variety of intracellular compartments in eukaryotic cells. V-ATPase and the lack of mycobacterial phagosome acidification are directly attributed to the Mtb protein tyrosine phosphatase PtpA.

Notable Publications

Author	Pubmed ID	Journal	Application
Lanxin Yuan	34835488	Microorganisms	WB
Dolma Choezom	35050379	J Cell Sci	WB
Edoardo Ratto	35977928	Nat Commun	WB

Storage

Storage:

Store at -20°C. Stable for one year after shipment.

Storage Buffer:

PBS with 0.02% sodium azide and 50% glycerol pH 7.3.

Aliquoting is unnecessary for -20°C storage

*** 20ul sizes contain 0.1% BSA

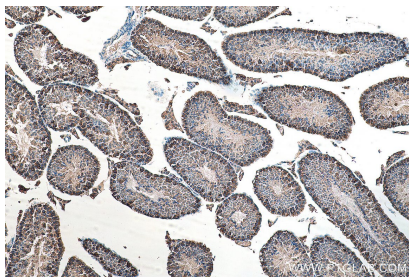
For technical support and original validation data for this product please contact:

T: 1 (888) 4PTGLAB (1-888-478-4522) (toll free in USA), or 1(312) 455-8498 (outside USA)

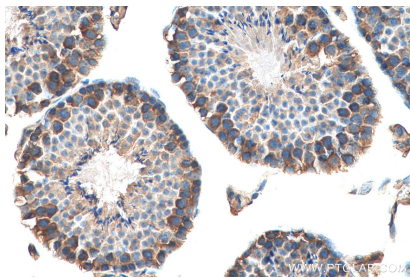
E: proteintech@ptglab.com
W: ptglab.com

This product is exclusively available under Proteintech Group brand and is not available to purchase from any other manufacturer.

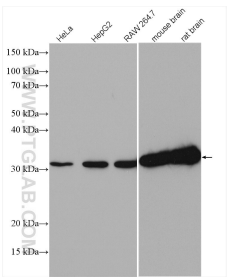
Selected Validation Data



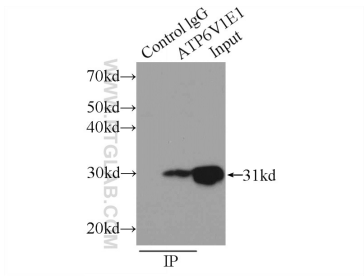
Immunohistochemical analysis of paraffin-embedded mouse testis tissue slide using 15280-1-AP (ATP6V1E1 antibody) at dilution of 1:500 (under 10x lens). Heat mediated antigen retrieval with Tris-EDTA buffer (pH 9.0).



Immunohistochemical analysis of paraffin-embedded mouse testis tissue slide using 15280-1-AP (ATP6V1E1 antibody) at dilution of 1:500 (under 40x lens). Heat mediated antigen retrieval with Tris-EDTA buffer (pH 9.0).



HeLa cells were subjected to SDS PAGE followed by western blot with 15280-1-AP (ATP6V1E1 antibody) at dilution of 1:3000 incubated at room temperature for 1.5 hours.



IP Result of anti-ATP6V1E1 (IP:15280-1-AP, 3ug; Detection:15280-1-AP 1:500) with mouse brain tissue lysate 6000ug.