

For Research Use Only

HSP60 Polyclonal antibody

Catalog Number: 15282-1-AP

Featured Product

112 Publications



Basic Information

Catalog Number: 15282-1-AP	GenBank Accession Number: BC003030	Purification Method: Antigen affinity purification
Size: 150ul , Concentration: 1000 µg/ml by Nanodrop;	GeneID (NCBI): 3329	Recommended Dilutions: WB 1:2000-1:16000 IP 0.5-4.0 ug for 1.0-3.0 mg of total protein lysate IHC 1:50-1:500 IF 1:50-1:500
Source: Rabbit	Full Name: heat shock 60kDa protein 1 (chaperonin)	
Isotype: IgG	Calculated MW: 61 kDa	
Immunogen Catalog Number: AG7401	Observed MW: 60 kDa	

Applications

Tested Applications: FC, IF, IHC, IP, WB, ELISA	Positive Controls:
Cited Applications: CoIP, ELISA, IF, IHC, IP, WB	WB : HEK-293 cells, HepG2 cells, NIH/3T3 cells, HeLa, mouse heart, rat heart
Species Specificity: human, mouse, rat	IP : HEK-293 cells,
Cited Species: human, chicken, yeast, rat, mouse, fish, pig, duck, rice, bovine	IHC : human lung cancer tissue,
Note-IHC: suggested antigen retrieval with TE buffer pH 9.0; (*) Alternatively, antigen retrieval may be performed with citrate buffer pH 6.0	IF : HeLa cells,

Background Information

HSPD1, also known as HSP60, belongs to the chaperonin family and acts as a chaperone to enhance cell survival under physiological stresses. Hsp60 has been shown to be connected with many aspects of cell functions such as protein folding and assembling of polypeptide chains in mitochondria. Recently it has been reported that HSP60 is associated with apoptosis or inhibition of cancer cell growth. (21822415)

Notable Publications

Author	Pubmed ID	Journal	Application
Beiwu Lan	36116558	Exp Cell Res	WB
Jianli Tang	36106732	mBio	WB,IF,IP
Panayotis Pachnis	36044570	Sci Adv	WB

Storage

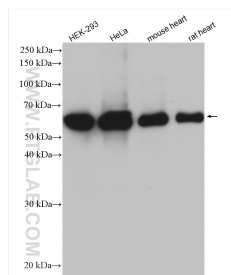
Storage:
Store at -20°C. Stable for one year after shipment.
Storage Buffer:
PBS with 0.02% sodium azide and 50% glycerol pH 7.3.
Aliquoting is unnecessary for -20°C storage

*** 20ul sizes contain 0.1% BSA

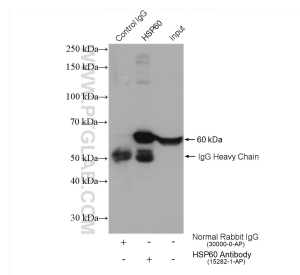
For technical support and original validation data for this product please contact:
T: 1 (888) 4PTGLAB (1-888-478-4522) (toll free in USA), or 1(312) 455-8498 (outside USA)
E: proteintech@ptglab.com
W: ptglab.com

This product is exclusively available under Proteintech Group brand and is not available to purchase from any other manufacturer.

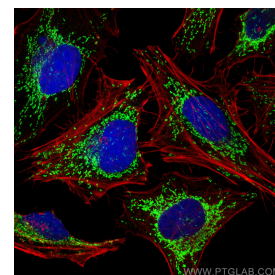
Selected Validation Data



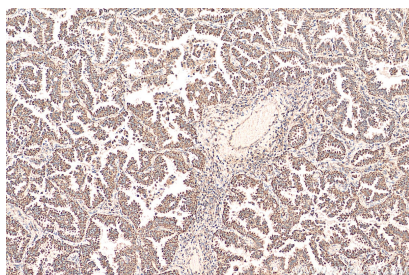
Various lysates were subjected to SDS PAGE followed by western blot with 15282-1-AP (HSP60 antibody) at dilution of 1:8000 incubated at room temperature for 1.5 hours.



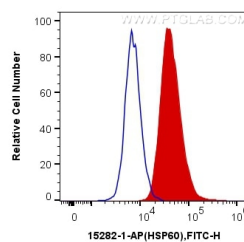
IP result of anti-HSP60(IP:15282-1-AP, 4ug; Detection:15282-1-AP 1:10000) with HEK-293 cells lysate 1800 ug.



Immunofluorescent analysis of (4% PFA) fixed HeLa cells using HSP60 antibody (15282-1-AP) at dilution of 1:200 and CoraLite®488-Conjugated AffiniPure Goat Anti-Rabbit IgG(H+L), (CL594-Phalloidin, red).



Immunohistochemical analysis of paraffin-embedded human lung cancer tissue slide using 15282-1-AP (HSP60 antibody) at dilution of 1:200 (under 10x lens). Heat mediated antigen retrieval with Tris-EDTA buffer (pH 9.0).



1X10⁶ HepG2 cells were intracellularly stained with 0.4 ug Anti-Human HSP60 (15282-1-AP) and CoraLite®488-Conjugated AffiniPure Goat Anti-Rabbit IgG(H+L) at dilution 1:1000 (red), or 0.4 ug x. Cells were fixed with 4% PFA and permeabilized with Flow Cytometry Perm Buffer (PF00011-C).