

For Research Use Only

ARFGAP3 Polyclonal antibody

Catalog Number: 15293-1-AP

Featured Product

3 Publications



Basic Information

Catalog Number: 15293-1-AP	GenBank Accession Number: BC005122	Purification Method: Antigen affinity purification
Size: 150ul, Concentration: 750 µg/ml by Nanodrop and 333 µg/ml by Bradford method using BSA as the standard;	GeneID (NCBI): 26286	Recommended Dilutions: WB 1:1000-1:4000 IP 0.5-4.0 ug for IP and 1:1000-1:4000 for WB
Source: Rabbit	Full Name: ADP-ribosylation factor GTPase activating protein 3	IHC 1:20-1:200 IF 1:10-1:100
Isotype: IgG	Calculated MW: 57 kDa	
Immunogen Catalog Number: AG7536	Observed MW: 57-66 kDa	

Applications

Tested Applications:
IF, IHC, IP, WB, ELISA

Cited Applications:
IF, WB

Species Specificity:
human, mouse, rat

Cited Species:
human, mouse

Note-IHC: suggested antigen retrieval with TE buffer pH 9.0; (*) Alternatively, antigen retrieval may be performed with citrate buffer pH 6.0

Positive Controls:

WB: HepG2 cells, mouse brain tissue, Jurkat cells

IP: HepG2 cells,

IHC: human breast cancer tissue,

IF: A431 cells, HepG2 cells

Background Information

ARFGAP3, also named as ADP-ribosylation factor GTPase-activating protein 3, is a 516 amino acid protein, which is widely expressed with highest expression in endocrine glands (pancreas, pituitary gland, salivary gland, and prostate). ARFGAP3 is a GTPase-activating protein (GAP) for ADP ribosylation factor 1 (ARF1). Hydrolysis of ARF1-bound GTP may lead to dissociation of coatomer from Golgi-derived membranes to allow fusion with target membranes. The calculated molecular weight of ARFGAP3 is 57 kDa, but modified ARFGAP3 is about 57-66 kDa.

Notable Publications

Author	Pubmed ID	Journal	Application
Xihua Yue	34493279	BMC Biol	WB
Xihua Yue	34876695	Commun Biol	WB
Suting Li	36476390	Cell Signal	IF

Storage

Storage:

Store at -20°C. Stable for one year after shipment.

Storage Buffer:

PBS with 0.02% sodium azide and 50% glycerol pH 7.3.

Aliquoting is unnecessary for -20°C storage

*** 20ul sizes contain 0.1% BSA

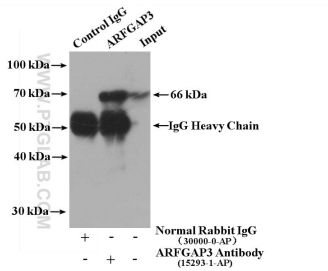
For technical support and original validation data for this product please contact:

T: 1 (888) 4PTGLAB (1-888-478-4522) (toll free in USA), or 1(312) 455-8498 (outside USA)

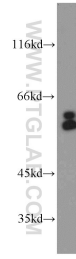
E: proteintech@ptglab.com
W: ptglab.com

This product is exclusively available under Proteintech Group brand and is not available to purchase from any other manufacturer.

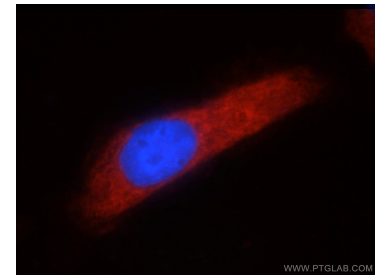
Selected Validation Data



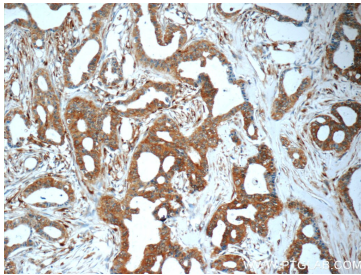
IP result of anti-ARFGAP3 (IP:15293-1-AP, 4 μ g; Detection:15293-1-AP 1:2000) with HepG2 cells lysate 3000 μ g.



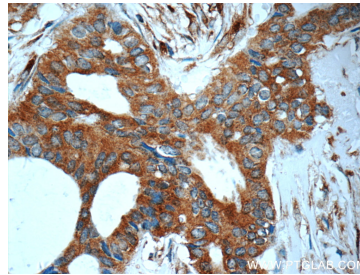
HepG2 cells were subjected to SDS PAGE followed by western blot with 15293-1-AP (ARFGAP3 antibody) at dilution of 1:2000 incubated at room temperature for 1.5 hours.



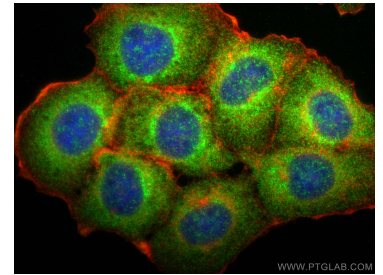
Immunofluorescent analysis of A431 cells using 15293-1-AP (ARFGAP3 antibody) at dilution of 1:25 and Rhodamine-Goat anti-Rabbit IgG.



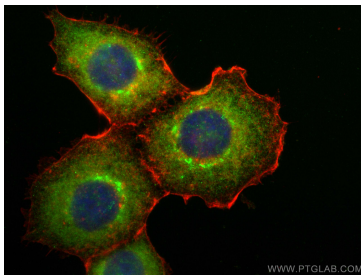
Immunohistochemical analysis of paraffin-embedded human breast cancer tissue slide using 15293-1-AP (ARFGAP3 Antibody) at dilution of 1:50 (under 10x lens).



Immunohistochemical analysis of paraffin-embedded human breast cancer tissue slide using 15293-1-AP (ARFGAP3 Antibody) at dilution of 1:50 (under 40x lens).



Immunofluorescent analysis of (-20°C Methanol) fixed A431 cells using ARFGAP3 antibody (15293-1-AP) at dilution of 1:400 and CoraLite®488-Conjugated AffiniPure Goat Anti-Rabbit IgG(H+L), CoraLite®594 Beta Actin antibody (CL594-66009, Clone: 2D4H5, red).



Immunofluorescent analysis of (-20°C Methanol) fixed A431 cells using ARFGAP3 antibody (15293-1-AP) at dilution of 1:400 and CoraLite®488-Conjugated AffiniPure Goat Anti-Rabbit IgG(H+L), CoraLite®594 Beta Actin antibody (CL594-66009, Clone: 2D4H5, red).