

For Research Use Only

RPH3AL Polyclonal antibody

Catalog Number: 15297-1-AP

2 Publications



Basic Information

Catalog Number:

15297-1-AP

Size:

150ul, Concentration: 260 ug/ml by Nanodrop and 160 ug/ml by Bradford method using BSA as the standard;

Source:

Rabbit

Isotype:

IgG

Immunogen Catalog Number:

AG7552

GenBank Accession Number:

BC005153

GeneID (NCBI):

9501

UNIPROT ID:

Q9UNE2

Full Name:

rabphilin 3A-like (without C2 domains)

Calculated MW:

34 kDa

Observed MW:

38 kDa

Purification Method:

Antigen affinity purification

Recommended Dilutions:

WB 1:500-1:2000

IP 0.5-4.0 ug for 1.0-3.0 mg of total protein lysate

Applications

Tested Applications:

WB, IP, ELISA

Cited Applications:

WB

Species Specificity:

human

Cited Species:

human

Positive Controls:

WB : human liver tissue, LO2 cells

IP : HepG2 cells,

Background Information

Rabphilin-3A-like (RPH3AL), also known as Noc2, is a Rab effector protein with a molecular weight of 38 kDa. It is expressed abundantly in endocrine cells but at low levels in exocrine tissues, playing a direct regulatory role in calcium-ion-dependent exocytosis in both endocrine and exocrine cells, and also having a key role in INS secretion by pancreatic cells. RPH3AL functions as a potential RAB3B effector protein in epithelial cells, and RPH3AL gene is likely a tumor suppressor.

Notable Publications

Author	Pubmed ID	Journal	Application
Jinn-Shiun Chen	21536019	Clin Chim Acta	WB
Kohichi Matsunaga	27927751	J Cell Sci	WB

Storage

Storage:

Store at -20°C. Stable for one year after shipment.

Storage Buffer:

PBS with 0.02% sodium azide and 50% glycerol pH 7.3.

Aliquoting is unnecessary for -20°C storage

*** 20ul sizes contain 0.1% BSA

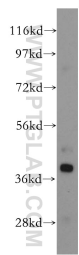
For technical support and original validation data for this product please contact:

T: 1 (888) 4PTGLAB (1-888-478-4522) (toll free in USA), or 1(312) 455-8498 (outside USA)

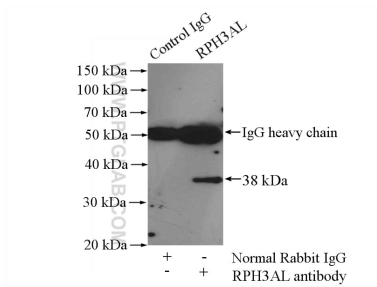
E: proteintech@ptglab.com
W: ptglab.com

This product is exclusively available under Proteintech Group brand and is not available to purchase from any other manufacturer.

Selected Validation Data



human liver tissue were subjected to SDS PAGE followed by western blot with 15297-1-AP (RPH3AL antibody) at dilution of 1:500 incubated at room temperature for 1.5 hours.



IP result of anti-RPH3AL (IP:15297-1-AP, 4ug; Detection:15297-1-AP 1:500) with HepG2 cells lysate 2400ug.