

For Research Use Only

THOC6 Polyclonal antibody

Catalog Number: 15316-1-AP

Featured Product

1 Publications



Basic Information

Catalog Number:

15316-1-AP

Size:

150ul, Concentration: 600 ug/ml by Nanodrop;

Source:

Rabbit

Isotype:

IgG

Immunogen Catalog Number:

AG7561

GenBank Accession Number:

BC003118

GeneID (NCBI):

79228

UNIPROT ID:

Q86W42

Full Name:

THO complex 6 homolog (Drosophila)

Calculated MW:

38 kDa

Observed MW:

35 kDa

Purification Method:

Antigen affinity purification

Recommended Dilutions:

WB 1:500-1:2000

IP 0.5-4.0 ug for 1.0-3.0 mg of total protein lysate

IHC 1:20-1:200

Applications

Tested Applications:

WB, IP, IHC, ELISA

Cited Applications:

WB

Species Specificity:

human, mouse, rat

Cited Species:

human

Note-IHC: suggested antigen retrieval with TE buffer pH 9.0; (*) Alternatively, antigen retrieval may be performed with citrate buffer pH 6.0

Positive Controls:

WB : A431 cells, mouse ovary tissue, Neuro-2a cells

IP : A431 cells,

IHC : human ovary tumor tissue,

Notable Publications

Author	Pubmed ID	Journal	Application
Toshie Sakuma	24618812	Viruses	WB

Storage

Storage:

Store at -20°C. Stable for one year after shipment.

Storage Buffer:

PBS with 0.02% sodium azide and 50% glycerol pH 7.3.

Aliquoting is unnecessary for -20°C storage

*** 20ul sizes contain 0.1% BSA

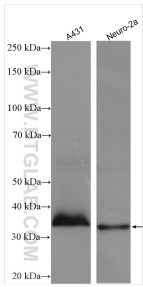
For technical support and original validation data for this product please contact:

T: 1 (888) 4PTGLAB (1-888-478-4522) (toll free in USA), or 1(312) 455-8498 (outside USA)

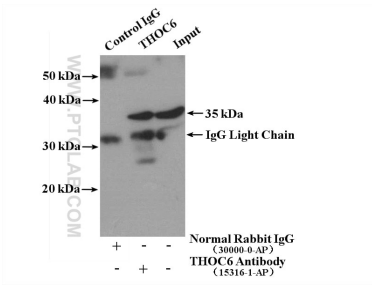
E: proteintech@ptglab.com
W: ptglab.com

This product is exclusively available under Proteintech Group brand and is not available to purchase from any other manufacturer.

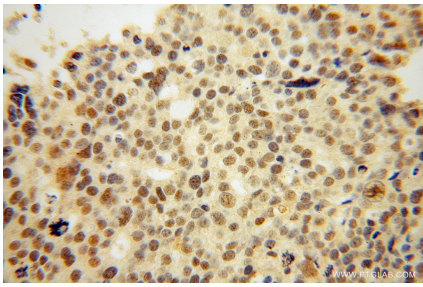
Selected Validation Data



Various lysates were subjected to SDS PAGE followed by western blot with 15316-1-AP (THOC6 antibody) at dilution of 1:1000 incubated at room temperature for 1.5 hours.



IP result of anti-THOC6 (IP:15316-1-AP, 4ug; Detection:15316-1-AP 1:300) with A431 cells lysate 2280 ug.



Immunohistochemical analysis of paraffin-embedded human ovary tumor using 15316-1-AP (THOC6 antibody) at dilution of 1:50 (under 40x lens).