

For Research Use Only

# SLC25A15 Polyclonal antibody

Catalog Number: 15317-1-AP



## Basic Information

### Catalog Number:

15317-1-AP

### Size:

150ul, Concentration: 133 ug/ml by Nanodrop and 133 ug/ml by Bradford method using BSA as the standard;

### Source:

Rabbit

### Isotype:

IgG

### Immunogen Catalog Number:

AG7563

### GenBank Accession Number:

BC002702

### GeneID (NCBI):

10166

### UNIPROT ID:

Q9Y619

### Full Name:

solute carrier family 25 (mitochondrial carrier; ornithine transporter) member 15

### Calculated MW:

33 kDa

### Observed MW:

30-33 kDa

### Purification Method:

Antigen affinity purification

### Recommended Dilutions:

WB 1:500-1:1000

IHC 1:50-1:500

IF/ICC 1:200-1:800

## Applications

### Tested Applications:

WB, IHC, IF/ICC, ELISA

### Species Specificity:

human, mouse, rat

**Note-IHC: suggested antigen retrieval with TE buffer pH 9.0; (\*) Alternatively, antigen retrieval may be performed with citrate buffer pH 6.0**

### Positive Controls:

**WB**: HeLa cells, mouse liver tissue, mouse stomach tissue

**IHC**: human liver cancer tissue, human skin tissue, human brain tissue, human lung tissue, human ovary tissue

**IF/ICC**: MCF-7 cells,

## Background Information

SLC25A15 gene encodes a 301-amino-acid-long mitochondrial carrier protein termed ORC1, which catalyzes the transport of cytosolic ornithine into mitochondria in exchange for citrulline (PMID: 19242930). Some mutations in the SLC25A15 gene have been reported to break the ornithine cycle and be related with human hyperornithinemia, hyperammonemia, and homocitrullinuria syndrome (PMID: 19242930, 24721342). This antibody detected SLC25A15 at an apparent molecular mass about 33 kDa.

## Storage

### Storage:

Store at -20°C. Stable for one year after shipment.

### Storage Buffer:

PBS with 0.02% sodium azide and 50% glycerol pH 7.3.

Aliquoting is unnecessary for -20°C storage

\*\*\* 20ul sizes contain 0.1% BSA

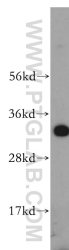
For technical support and original validation data for this product please contact:

T: 1 (888) 4PTGLAB (1-888-478-4522) (toll free in USA), or 1(312) 455-8498 (outside USA)

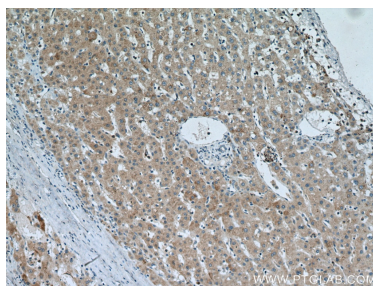
E: [proteintech@ptglab.com](mailto:proteintech@ptglab.com)  
W: [ptglab.com](http://ptglab.com)

This product is exclusively available under Proteintech Group brand and is not available to purchase from any other manufacturer.

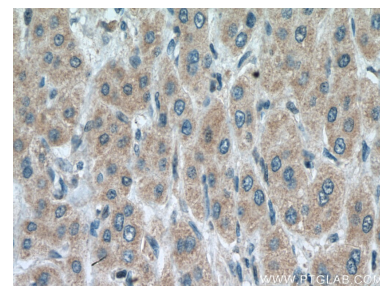
## Selected Validation Data



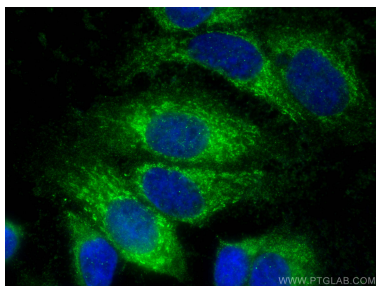
HeLa cells were subjected to SDS PAGE followed by western blot with 15317-1-AP (SLC25A15 antibody) at dilution of 1:500 incubated at room temperature for 1.5 hours.



Immunohistochemical analysis of paraffin-embedded human liver cancer tissue slide using 15317-1-AP (SLC25A15 antibody) at dilution of 1:200 (under 10x lens. Heat mediated antigen retrieval with Tris-EDTA buffer (pH 9.0).



Immunohistochemical analysis of paraffin-embedded human liver cancer tissue slide using 15317-1-AP (SLC25A15 antibody) at dilution of 1:200 (under 40x lens. Heat mediated antigen retrieval with Tris-EDTA buffer (pH 9.0).



Immunofluorescent analysis of (-20°C Methanol) fixed MCF-7 cells using SLC25A15 antibody (15317-1-AP) at dilution of 1:400 and CoraLite®488-Conjugated Goat Anti-Rabbit IgG(H+L).