

For Research Use Only

PAM16 Polyclonal antibody

Catalog Number: 15321-1-AP

3 Publications



Basic Information

Catalog Number:

15321-1-AP

Size:

150ul, Concentration: 260 ug/ml by Bradford method using BSA as the standard;

Source:

Rabbit

Isotype:

IgG

Immunogen Catalog Number:

AG0970

GenBank Accession Number:

BC005024

GeneID (NCBI):

51025

UNIPROT ID:

Q9Y3D7

Full Name:

mitochondria-associated protein involved in granulocyte-macrophage colony-stimulating factor signal transduction

Calculated MW:

14 kDa

Observed MW:

14 kDa

Purification Method:

Antigen affinity purification

Recommended Dilutions:

WB 1:200-1:1000

IHC 1:50-1:500

Applications

Tested Applications:

WB, IHC, ELISA

Cited Applications:

WB, IHC

Species Specificity:

human

Cited Species:

human, mouse

Positive Controls:

WB: HepG2 cells,

IHC: human ovary cancer tissue,

Note-IHC: suggested antigen retrieval with TE buffer pH 9.0; (*) Alternatively, antigen retrieval may be performed with citrate buffer pH 6.0

Background Information

PAM16, also named as Magmas, TIM16 and TIMM16, is regulates ATP-dependent protein translocation into the mitochondrial matrix. The MW of PAM16 is about 14-16 kDa in WB detection. PAM16 is a component of the PAM complex at least composed of a mitochondrial HSP70 protein, GRPEL1 or GRPEL2, TIMM44, TIMM16/PAM16 and TIMM14/DNAJC19.

Notable Publications

Author	Pubmed ID	Journal	Application
Jonas Benjamin Michaelis	36056001	Nat Commun	WB
Kaijun Di	30414099	J Neurooncol	IHC
Dingbang Huang	38091880	Redox Biol	WB

Storage

Storage:

Store at -20°C. Stable for one year after shipment.

Storage Buffer:

PBS with 0.02% sodium azide and 50% glycerol pH 7.3.

Aliquoting is unnecessary for -20°C storage

*** 20ul sizes contain 0.1% BSA

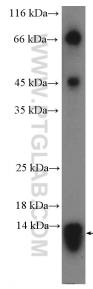
For technical support and original validation data for this product please contact:

T: 1 (888) 4PTGLAB (1-888-478-4522) (toll free in USA), or 1(312) 455-8498 (outside USA)

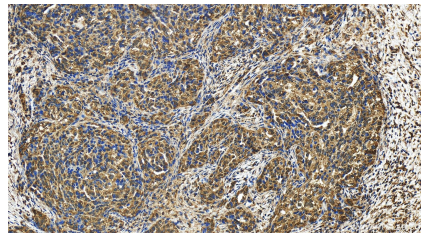
E: proteintech@ptglab.com
W: ptglab.com

This product is exclusively available under Proteintech Group brand and is not available to purchase from any other manufacturer.

Selected Validation Data



HepG2 cells were subjected to SDS PAGE followed by western blot with 15321-1-AP (PAM16 Antibody) at dilution of 1:300 incubated at room temperature for 1.5 hours.



Immunohistochemical analysis of paraffin-embedded human ovary cancer tissue slide using 15321-1-AP (PAM16 antibody) at dilution of 1:100 (under 20x lens). Heat mediated antigen retrieval with Tris-EDTA buffer (pH 9.0).