

For Research Use Only

PAM16 Polyclonal antibody, PBS Only

Catalog Number:15321-1-PBS



Basic Information

Catalog Number:

15321-1-PBS

Size:

100ug , Concentration: 1 mg/ml by Nanodrop;

Source:

Rabbit

Isotype:

IgG

Immunogen Catalog Number:

AG0970

GenBank Accession Number:

BC005024

GeneID (NCBI):

51025

UNIPROT ID:

Q9Y3D7

Full Name:

mitochondria-associated protein involved in granulocyte-macrophage colony-stimulating factor signal transduction

Calculated MW:

14 kDa

Observed MW:

14 kDa

Purification Method:

Antigen affinity purification

Applications

Tested Applications:

WB, IHC, Indirect ELISA

Species Specificity:

human

Background Information

PAM16, also named as Magmas, TIM16 and TIMM16, is regulates ATP-dependent protein translocation into the mitochondrial matrix. The MW of PAM16 is about 14-16 kDa in WB detection. PAM16 is a component of the PAM complex at least composed of a mitochondrial HSP70 protein, GRPEL1 or GRPEL2, TIMM44, TIMM16/PAM16 and TIMM14/DNAJC19.

Storage

Storage:

Store at -80°C.

Storage Buffer:

PBS Only

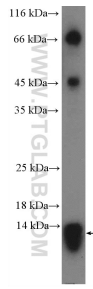
For technical support and original validation data for this product please contact:

T: 1 (888) 4PTGLAB (1-888-478-4522) (toll free in USA), or 1(312) 455-8498 (outside USA)

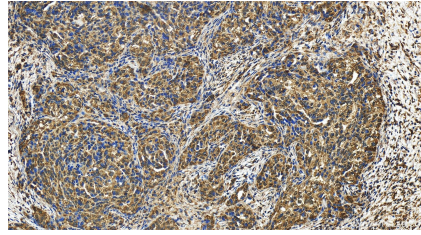
E: proteintech@ptglab.com
W: ptglab.com

This product is exclusively available under Proteintech Group brand and is not available to purchase from any other manufacturer.

Selected Validation Data



HepG2 cells were subjected to SDS PAGE followed by western blot with 15321-1-AP (PAM16 Antibody) at dilution of 1:300 incubated at room temperature for 1.5 hours. This data was developed using the same antibody clone with 15321-1-PBS in a different storage buffer formulation.



Immunohistochemical analysis of paraffin-embedded human ovary cancer tissue slide using 15321-1-AP (PAM16 antibody) at dilution of 1:100 (under 20x lens). Heat mediated antigen retrieval with Tris-EDTA buffer (pH 9.0). This data was developed using the same antibody clone with 15321-1-PBS in a different storage buffer formulation.