

For Research Use Only

# RCL1 Polyclonal antibody

Catalog Number: 15330-1-AP

2 Publications



## Basic Information

Catalog Number:

15330-1-AP

Size:

150ul, Concentration: 500 ug/ml by Nanodrop and 333 ug/ml by Bradford method using BSA as the standard;

Source:

Rabbit

Isotype:

IgG

Immunogen Catalog Number:

AG7058

GenBank Accession Number:

BC001025

GeneID (NCBI):

10171

UNIPROT ID:

Q9Y2P8

Full Name:

RNA terminal phosphate cyclase-like

1

Calculated MW:

41 kDa

Observed MW:

41 kDa

Purification Method:

Antigen affinity purification

Recommended Dilutions:

WB 1:500-1:2000

IF/ICC 1:10-1:100

## Applications

Tested Applications:

WB, IF/ICC, ELISA

Cited Applications:

WB, IF

Species Specificity:

human, mouse, rat

Cited Species:

human

Positive Controls:

WB : A431 cells, HepG2 cells, A375 cells, MCF-7 cells

IF/ICC : A375 cells,

## Notable Publications

Author	Pubmed ID	Journal	Application
Yu Jiaze	35264160	Cancer Cell Int	WB,IF
Yong Wang	37451810	J Mol Cell Biol	WB,IF

## Storage

Storage:

Store at -20°C. Stable for one year after shipment.

Storage Buffer:

PBS with 0.02% sodium azide and 50% glycerol pH 7.3.

Aliquoting is unnecessary for -20°C storage

\*\*\* 20ul sizes contain 0.1% BSA

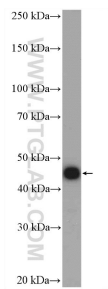
For technical support and original validation data for this product please contact:

T: 1 (888) 4PTGLAB (1-888-478-4522) (toll free in USA), or 1(312) 455-8498 (outside USA)

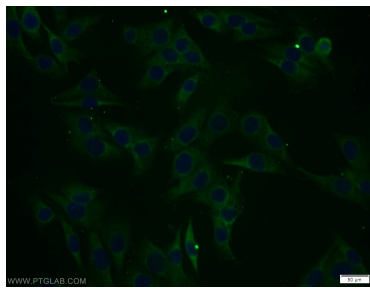
E: [proteintech@ptglab.com](mailto:proteintech@ptglab.com)  
W: [ptglab.com](http://ptglab.com)

This product is exclusively available under Proteintech Group brand and is not available to purchase from any other manufacturer.

## Selected Validation Data



A431 cells were subjected to SDS PAGE followed by western blot with 15330-1-AP (RCL1 antibody) at dilution of 1:1000 incubated at room temperature for 1.5 hours.



Immunofluorescent analysis of A375 cells using 15330-1-AP (RCL1 antibody) at dilution of 1:25 and Alexa Fluor 488-conjugated Goat Anti-Rabbit IgG(H+L).