

For Research Use Only

TPSB2 Polyclonal antibody, PBS Only

Catalog Number:15332-1-PBS



Basic Information

Catalog Number:

15332-1-PBS

Size:

100ug , Concentration: 1 mg/ml by Nanodrop;

Source:

Rabbit

Isotype:

IgG

Immunogen Catalog Number:

AG7335

GenBank Accession Number:

BC065923

GeneID (NCBI):

64499

UNIPROT ID:

P20231

Full Name:

tryptase beta 2

Calculated MW:

31 kDa

Observed MW:

31 kDa

Purification Method:

Antigen affinity purification

Applications

Tested Applications:

WB, Indirect ELISA

Species Specificity:

human, mouse

Background Information

Tryptase beta-2 (TPSB2), also known as TPS2, is a member of the peptidase S1 family and the mast cell-specific tryptase subfamily. It is a serine protease primarily expressed in mast cells and basophils. TPSB2 is synthesized as a proenzyme, stored in secretory granules, and released upon cell activation. It plays a crucial role in allergic reactions and inflammation by cleaving extracellular matrix proteins, activating protease-activated receptors (PARs), and processing cytokines like IL-33. Elevated levels of TPSB2 are associated with conditions such as asthma, allergic rhinitis, and anaphylaxis, making it a biomarker and therapeutic target in these areas.

Storage

Storage:

Store at -80°C.

Storage Buffer:

PBS only, pH7.3

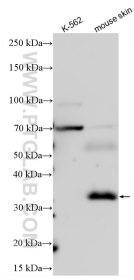
For technical support and original validation data for this product please contact:

T: 1 (888) 4PTGLAB (1-888-478-4522) (toll free in USA), or 1(312) 455-8498 (outside USA)

E: proteintech@ptglab.com
W: ptglab.com

This product is exclusively available under Proteintech Group brand and is not available to purchase from any other manufacturer.

Selected Validation Data



Various lysates were subjected to SDS PAGE followed by western blot with 15332-1-AP (TPSB2 antibody) at dilution of 1:2000 incubated at room temperature for 1.5 hours. TPSB2 deficient cell line K-562 served as a negative control. This data was developed using the same antibody clone with 15332-1-PBS in a different storage buffer formulation.