

For Research Use Only

SEPX1 Polyclonal antibody

Catalog Number: 15333-1-AP **3 Publications**



Basic Information

Catalog Number: 15333-1-AP	GenBank Accession Number: BC003127	Purification Method: Antigen affinity purification
Size: 150ul , Concentration: 500 µg/ml by Nanodrop and 327 µg/ml by Bradford method using BSA as the standard;	GeneID (NCBI): 51734	Recommended Dilutions: IHC 1:20-1:200
Source: Rabbit	Full Name: selenoprotein X, 1	
Isotype: IgG	Calculated MW: 13 kDa	
Immunogen Catalog Number: AG7391		

Applications

Tested Applications: IHC, ELISA	Positive Controls: IHC : mouse kidney tissue,
Cited Applications: IHC, WB	
Species Specificity: human, mouse, rat	
Cited Species: human, mouse, rat	

Note-IHC: suggested antigen retrieval with TE buffer pH 9.0; (*) Alternatively, antigen retrieval may be performed with citrate buffer pH 6.0

Background Information

Notable Publications

Author	Pubmed ID	Journal	Application
Lo Lai	31606431	Free Radic Biol Med	WB
Zhipeng Li	35637349	Nat Chem Biol	WB
Xinliang Zou	35900670	J Cardiovasc Transl Res	IHC

Storage

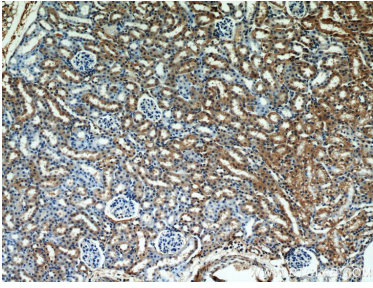
Storage:
Store at -20°C. Stable for one year after shipment.
Storage Buffer:
PBS with 0.02% sodium azide and 50% glycerol pH 7.3.
Aliquoting is unnecessary for -20°C storage

***** 20ul sizes contain 0.1% BSA**

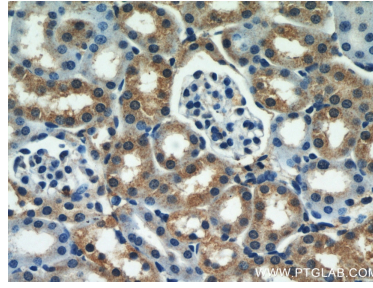
For technical support and original validation data for this product please contact:
T: 1 (888) 4PTGLAB (1-888-478-4522) (toll free in USA), or 1(312) 455-8498 (outside USA) E: proteintech@ptglab.com W: ptglab.com

This product is exclusively available under Proteintech Group brand and is not available to purchase from any other manufacturer.

Selected Validation Data



Immunohistochemical analysis of paraffin-embedded mouse kidney using 15333-1-AP (SEPX1 antibody) at dilution of 1:50 (under 10x lens).



Immunohistochemical analysis of paraffin-embedded mouse kidney using 15333-1-AP (SEPX1 antibody) at dilution of 1:50 (under 40x lens).