

For Research Use Only

# CLPTM1 Polyclonal antibody

Catalog Number: 15337-1-AP



## Basic Information

### Catalog Number:

15337-1-AP

### Size:

150ul, Concentration: 450 ug/ml by Nanodrop;

### Source:

Rabbit

### Isotype:

IgG

### Immunogen Catalog Number:

AG7538

### GenBank Accession Number:

BC004865

### GeneID (NCBI):

1209

### UNIPROT ID:

O96005

### Full Name:

cleft lip and palate associated transmembrane protein 1

### Calculated MW:

62 kDa

### Observed MW:

65-75 kDa

### Purification Method:

Antigen affinity purification

### Recommended Dilutions:

WB 1:500-1:2000

IP 0.5-4.0 ug for 1.0-3.0 mg of total protein lysate

IHC 1:50-1:500

## Applications

### Tested Applications:

WB, IHC, IP, ELISA

### Species Specificity:

human, mouse, rat

**Note-IHC: suggested antigen retrieval with TE buffer pH 9.0; (\*) Alternatively, antigen retrieval may be performed with citrate buffer pH 6.0**

### Positive Controls:

WB: mouse brain tissue, rat brain tissue

IP: A549 cells,

IHC: mouse brain tissue,

## Background Information

Cleft lip and palate transmembrane protein 1 (CLPTM1), a multipass transmembrane protein, was identified due to the association of a chromosomal translocation with a cleft lip and palate (PMID: 9828125). CLPTM1 regulates epileptic seizures by modulating GABAAR-mediated inhibitory synaptic transmission (PMID: 36519412). Highly expressed CLPTM1L may contribute to a poor prognosis and increase invasion, proliferation and migration of oral squamous cell carcinoma (PMID: 34586883).

## Storage

### Storage:

Store at -20°C. Stable for one year after shipment.

### Storage Buffer:

PBS with 0.02% sodium azide and 50% glycerol

Aliquoting is unnecessary for -20°C storage

\*\*\* 20ul sizes contain 0.1% BSA

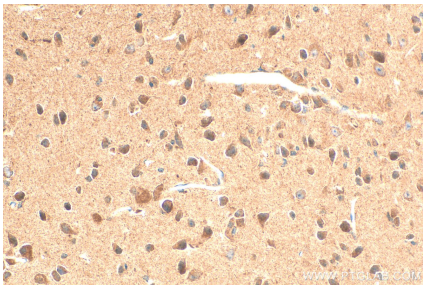
For technical support and original validation data for this product please contact:

T: 1 (888) 4PTGLAB (1-888-478-4522) (toll free in USA), or 1(312) 455-8498 (outside USA)

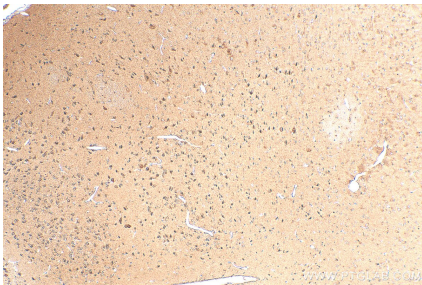
E: [proteintech@ptglab.com](mailto:proteintech@ptglab.com)  
W: [ptglab.com](http://ptglab.com)

This product is exclusively available under Proteintech Group brand and is not available to purchase from any other manufacturer.

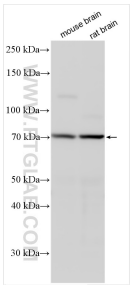
Selected Validation Data



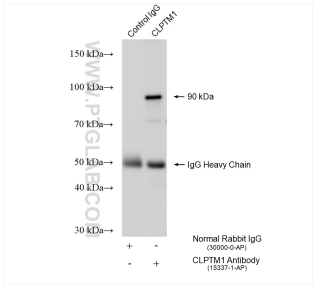
Immunohistochemical analysis of paraffin-embedded mouse brain tissue slide using 15337-1-AP (CLPTM1 antibody) at dilution of 1:200 (under 40x lens). Heat mediated antigen retrieval with Tris-EDTA buffer (pH 9.0).



Immunohistochemical analysis of paraffin-embedded mouse brain tissue slide using 15337-1-AP (CLPTM1 antibody) at dilution of 1:200 (under 10x lens). Heat mediated antigen retrieval with Tris-EDTA buffer (pH 9.0).



Various lysates were subjected to SDS PAGE followed by western blot with 15337-1-AP (CLPTM1 antibody) at dilution of 1:1000 incubated at room temperature for 1.5 hours.



IP result of anti-CLPTM1 (IP:15337-1-AP, 4ug; Detection:15337-1-AP 1:300) with A549 cells lysate 1050 ug.