

For Research Use Only

CLPTM1 Polyclonal antibody, PBS Only

Catalog Number: 15337-1-PBS



Basic Information

Catalog Number: 15337-1-PBS	GenBank Accession Number: BC004865	Purification Method: Antigen affinity purification
Size: 100ug , Concentration: 1 mg/ml by Nanodrop;	GeneID (NCBI): 1209	
Source: Rabbit	UNIPROT ID: O96005	
Isotype: IgG	Full Name: cleft lip and palate associated transmembrane protein 1	
Immunogen Catalog Number: AG7538	Calculated MW: 62 kDa	
	Observed MW: 65-75 kDa	

Applications

Tested Applications:
WB, IHC, IP, Indirect ELISA

Species Specificity:
human, mouse, rat

Background Information

Cleft lip and palate transmembrane protein 1 (CLPTM1), a multipass transmembrane protein, was identified due to the association of a chromosomal translocation with a cleft lip and palate (PMID: 9828125). CLPTM1 regulates epileptic seizures by modulating GABAAR-mediated inhibitory synaptic transmission (PMID: 36519412). Highly expressed CLPTM1L may contribute to a poor prognosis and increase invasion, proliferation and migration of oral squamous cell carcinoma (PMID: 34586883).

Storage

Storage:
Store at -80°C.

Storage Buffer:
PBS only

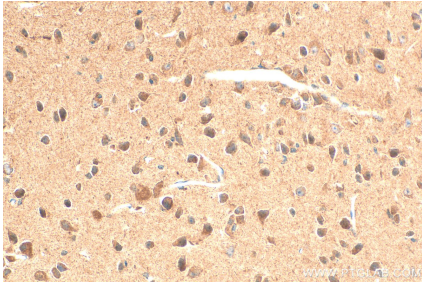
For technical support and original validation data for this product please contact:

T: 1 (888) 4PTGLAB (1-888-478-4522) (toll free in USA), or 1(312) 455-8498 (outside USA)

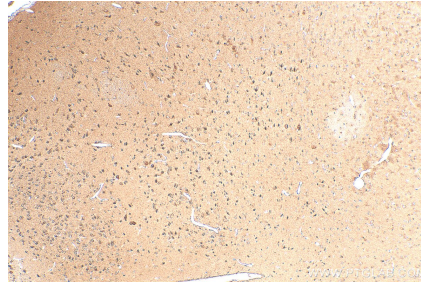
E: proteintech@ptglab.com
W: ptglab.com

This product is exclusively available under Proteintech Group brand and is not available to purchase from any other manufacturer.

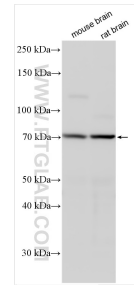
Selected Validation Data



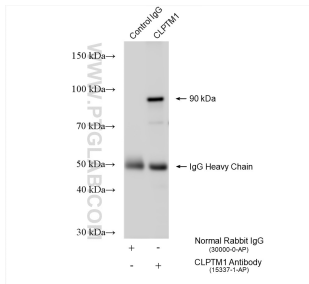
Immunohistochemical analysis of paraffin-embedded mouse brain tissue slide using 15337-1-AP (CLPTM1 antibody) at dilution of 1:200 (under 40x lens). Heat mediated antigen retrieval with Tris-EDTA buffer (pH 9.0). This data was developed using the same antibody clone with 15337-1-PBS in a different storage buffer formulation.



Immunohistochemical analysis of paraffin-embedded mouse brain tissue slide using 15337-1-AP (CLPTM1 antibody) at dilution of 1:200 (under 10x lens). Heat mediated antigen retrieval with Tris-EDTA buffer (pH 9.0). This data was developed using the same antibody clone with 15337-1-PBS in a different storage buffer formulation.



Various lysates were subjected to SDS PAGE followed by western blot with 15337-1-AP (CLPTM1 antibody) at dilution of 1:1000 incubated at room temperature for 1.5 hours. This data was developed using the same antibody clone with 15337-1-PBS in a different storage buffer formulation.



IP result of anti-CLPTM1 (IP:15337-1-AP, 4ug; Detection:15337-1-AP 1:300) with A549 cells lysate 1050 ug. This data was developed using the same antibody clone with 15337-1-PBS in a different storage buffer formulation.