

For Research Use Only

POLR3D Polyclonal antibody

Catalog Number: 15339-1-AP **1 Publications**



Basic Information

Catalog Number: 15339-1-AP	GenBank Accession Number: BC004484	Purification Method: Antigen affinity purification
Size: 150ul , Concentration: 550 µg/ml by Nanodrop and 400 µg/ml by Bradford method using BSA as the standard;	GeneID (NCBI): 661	Recommended Dilutions: WB 1:1000-1:4000 IP 0.5-4.0 ug for IP and 1:200-1:1000 for WB
Source: Rabbit	Full Name: polymerase (RNA) III (DNA directed) polypeptide D, 44kDa	IF 1:50-1:500
Isotype: IgG	Calculated MW: 44 kDa	
Immunogen Catalog Number: AG7542	Observed MW: 44 kDa	

Applications

Tested Applications: IF, IP, WB, ELISA	Positive Controls:
Cited Applications: WB	WB: mouse brain tissue, mouse testis tissue, HeLa cells, rat brain tissue, rat testis tissue
Species Specificity: human, mouse, rat	IP: HeLa cells,
Cited Species: human	IF: HeLa cells,

Background Information

DNA-dependent RNA polymerase catalyzes the transcription of DNA into RNA using the four ribonucleoside triphosphates as substrates. Polymerase (RNA) III (DNA directed) polypeptide D (POLR3D) plays a key role in sensing and limiting infection by intracellular bacteria and DNA viruses and acts as nuclear and cytosolic DNA sensor involved in innate immune response. POLR3D can sense non-self dsDNA that serves as template for transcription into dsRNA.

Notable Publications

Author	Pubmed ID	Journal	Application
Richa Ahuja	28488757	FEBS J	WB

Storage

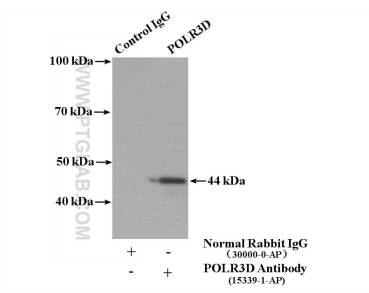
Storage:
Store at -20°C. Stable for one year after shipment.
Storage Buffer:
PBS with 0.02% sodium azide and 50% glycerol pH 7.3.
Aliquoting is unnecessary for -20°C storage

*** 20ul sizes contain 0.1% BSA

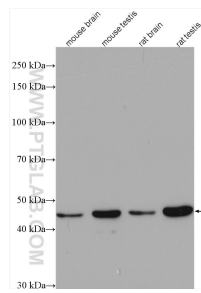
For technical support and original validation data for this product please contact:
T: 1 (888) 4PTGLAB (1-888-478-4522) (toll free in USA), or 1(312) 455-8498 (outside USA)
E: proteintech@ptglab.com
W: ptglab.com

This product is exclusively available under Proteintech Group brand and is not available to purchase from any other manufacturer.

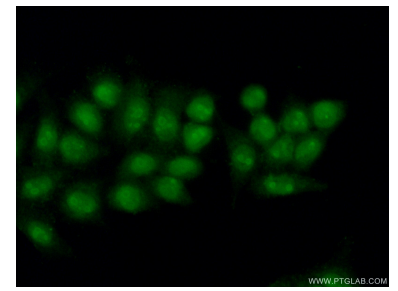
Selected Validation Data



IP result of anti-POLR3D (IP:15339-1-AP, 4ug; Detection:15339-1-AP 1:300) with HeLa cells lysate 2600 ug.



Various lysates were subjected to SDS PAGE followed by western blot with 15339-1-AP (POLR3D antibody) at dilution of 1:2000 incubated at room temperature for 1.5 hours.



Immunofluorescent analysis of (10% Formaldehyde) fixed HeLa cells using 15339-1-AP (POLR3D antibody) at dilution of 1:50 and Alexa Fluor 488-conjugated AffiniPure Goat Anti-Rabbit IgG(H+L).