

For Research Use Only

CKMT1A Polyclonal antibody

Catalog Number: 15346-1-AP

Featured Product

19 Publications



Basic Information

Catalog Number:

15346-1-AP

Size:

150ul, Concentration: 750 ug/ml by Nanodrop;

Source:

Rabbit

Isotype:

IgG

Immunogen Catalog Number:

AG7583

GenBank Accession Number:

BC001926

GeneID (NCBI):

548596

UNIPROT ID:

P12532

Full Name:

creatine kinase, mitochondrial 1A

Calculated MW:

47 kDa

Observed MW:

40-50 kDa

Purification Method:

Antigen affinity purification

Recommended Dilutions:

WB 1:500-1:3000

IP 0.5-4.0 ug for 1.0-3.0 mg of total protein lysate

IHC 1:400-1:1600

Applications

Tested Applications:

WB, IHC, IP, ELISA

Cited Applications:

WB, IHC, IF

Species Specificity:

human, mouse, rat

Cited Species:

human, mouse, rat, pig

Note-IHC: suggested antigen retrieval with TE buffer pH 9.0; (*) Alternatively, antigen retrieval may be performed with citrate buffer pH 6.0

Positive Controls:

WB : rat heart tissue, human colon tissue, human testis tissue, mouse heart tissue, mouse testis tissue, HEK-293 cells, A549 cells

IP : mouse heart tissue,

IHC : human colon cancer tissue, human breast cancer tissue

Background Information

CKMT1A (Creatine kinase U-type, mitochondrial) is also named CKMT and belongs to the ATP:guanido phosphotransferase family. CKMT1A is a nearly identical copy of the CKMT1B gene. Both genes encode an identical CKMT1 protein (PMID:17098888). It reversibly catalyzes the transfer of phosphate between ATP and various phosphates. It has 2 isoforms produced by alternative splicing with the molecular weight of 47 kDa and 50 kDa.

Notable Publications

Author	Pubmed ID	Journal	Application
Paul Ikkan Sia	31634394	Invest Ophthalmol Vis Sci	WB, IHC, FC
Glyn Chidlow	36467607	Front Cell Neurosci	IHC
Daniel S Narayan	31803010	Front Neurosci	IF

Storage

Storage:

Store at -20°C. Stable for one year after shipment.

Storage Buffer:

PBS with 0.02% sodium azide and 50% glycerol pH 7.3.

Aliquoting is unnecessary for -20°C storage

*** 20ul sizes contain 0.1% BSA

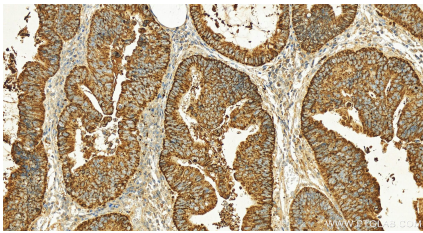
For technical support and original validation data for this product please contact:

T: 1 (888) 4PTGLAB (1-888-478-4522) (toll free in USA), or 1(312) 455-8498 (outside USA)

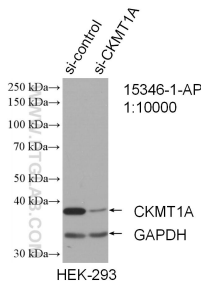
E: proteintech@ptglab.com
W: ptglab.com

This product is exclusively available under Proteintech Group brand and is not available to purchase from any other manufacturer.

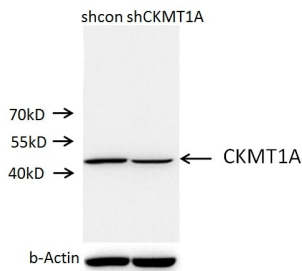
Selected Validation Data



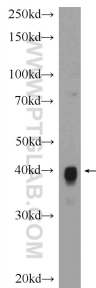
Immunohistochemical analysis of paraffin-embedded human colon cancer tissue slide using 15346-1-AP (CKMT1A antibody) at dilution of 1:800 (under 20x lens). Heat mediated antigen retrieval with Tris-EDTA buffer (pH 9.0).



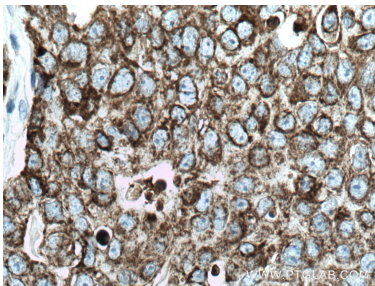
WB result of CKMT1A antibody (15346-1-AP; 1:10000; incubated at room temperature for 1.5 hours) with sh-Control and sh-CKMT1A transfected HEK-293 cells.



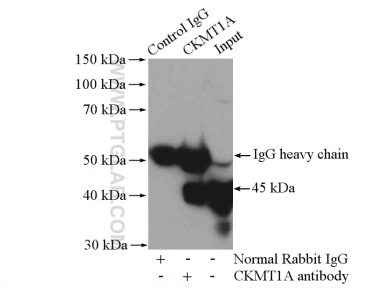
A549 cells (shcontrol and shRNA of CKMT1A) were subjected to SDS PAGE followed by western blot with 15346-1-AP (CKMT1A antibody) at dilution of 1:30.



rat heart tissue were subjected to SDS PAGE followed by western blot with 15346-1-AP (CKMT1A Antibody) at dilution of 1:1500 incubated at room temperature for 1.5 hours.



Immunohistochemical analysis of paraffin-embedded human breast cancer tissue slide using 15346-1-AP (CKMT1A antibody) at dilution of 1:200 (under 40x lens). Heat mediated antigen retrieval with Tris-EDTA buffer (pH 9.0).



IP result of anti-CKMT1A (IP:15346-1-AP, 4ug; Detection:15346-1-AP 1:1000) with mouse heart tissue lysate 3200ug.