

For Research Use Only

CKMT1A Polyclonal antibody, PBS Only

Catalog Number: 15346-1-PBS

Featured Product



Basic Information

Catalog Number:

15346-1-PBS

Size:

100ug, Concentration: 1 mg/ml by Nanodrop;

Source:

Rabbit

Isotype:

IgG

Immunogen Catalog Number:

AG7583

GenBank Accession Number:

BC001926

GeneID (NCBI):

548596

UNIPROT ID:

P12532

Full Name:

creatine kinase, mitochondrial 1A

Calculated MW:

47 kDa

Observed MW:

40-50 kDa

Purification Method:

Antigen affinity purification

Applications

Tested Applications:

WB, IHC, IP, Indirect ELISA

Species Specificity:

human, mouse, rat

Background Information

CKMT1A (Creatine kinase U-type, mitochondrial) is also named CKMT and belongs to the ATP:guanido phosphotransferase family. CKMT1A is a nearly identical copy of the CKMT1B gene. Both genes encode an identical CKMT1 protein (PMID:17098888). It reversibly catalyzes the transfer of phosphate between ATP and various phosphates. It has 2 isoforms produced by alternative splicing with the molecular weight of 47 kDa and 50 kDa.

Storage

Storage:

Store at -80°C.

Storage Buffer:

PBS Only

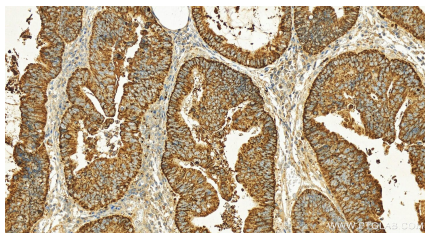
For technical support and original validation data for this product please contact:

T: 1 (888) 4PTGLAB (1-888-478-4522) (toll free in USA), or 1(312) 455-8498 (outside USA)

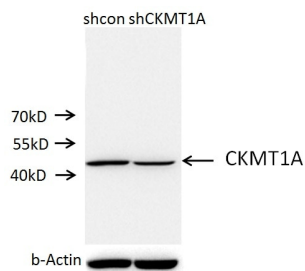
E: proteintech@ptglab.com
W: ptglab.com

This product is exclusively available under Proteintech Group brand and is not available to purchase from any other manufacturer.

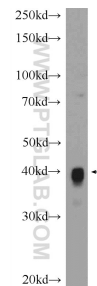
Selected Validation Data



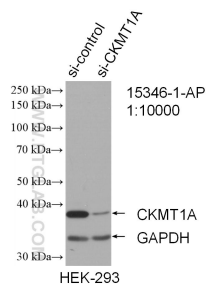
Immunohistochemical analysis of paraffin-embedded human colon cancer tissue slide using 15346-1-AP (CKMT1A antibody) at dilution of 1:800 (under 20x lens). Heat mediated antigen retrieval with Tris-EDTA buffer (pH 9.0). This data was developed using the same antibody clone with 15346-1-PBS in a different storage buffer formulation.



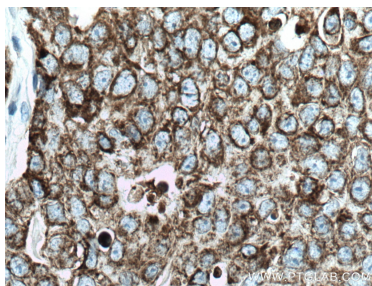
A549 cells (shcontrol and shRNA of CKMT1A) were subjected to SDS PAGE followed by western blot with 15346-1-AP (CKMT1A antibody) at dilution of 1:30. This data was developed using the same antibody clone with 15346-1-PBS in a different storage buffer formulation.



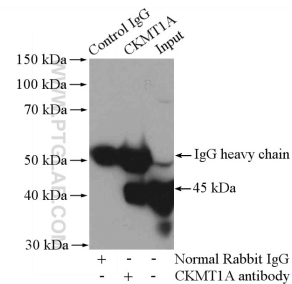
rat heart tissue were subjected to SDS PAGE followed by western blot with 15346-1-AP (CKMT1A antibody) at dilution of 1:1500 incubated at room temperature for 1.5 hours. This data was developed using the same antibody clone with 15346-1-PBS in a different storage buffer formulation.



WB result of CKMT1A antibody (15346-1-AP; 1:10000; incubated at room temperature for 1.5 hours) with sh-Control and sh-CKMT1A transfected HEK-293 cells. This data was developed using the same antibody clone with 15346-1-PBS in a different storage buffer formulation.



Immunohistochemical analysis of paraffin-embedded human breast cancer tissue slide using 15346-1-AP (CKMT1A antibody) at dilution of 1:200 (under 40x lens). Heat mediated antigen retrieval with Tris-EDTA buffer (pH 9.0). This data was developed using the same antibody clone with 15346-1-PBS in a different storage buffer formulation.



IP result of anti-CKMT1A (IP:15346-1-AP, 4ug; Detection:15346-1-AP 1:1000) with mouse heart tissue lysate 3200ug. This data was developed using the same antibody clone with 15346-1-PBS in a different storage buffer formulation.