

For Research Use Only

PA2G4 Polyclonal antibody

Catalog Number: 15348-1-AP

Featured Product

6 Publications



Basic Information

Catalog Number:

15348-1-AP

Size:

150ul, Concentration: 300 ug/ml by Nanodrop;

Source:

Rabbit

Isotype:

IgG

Immunogen Catalog Number:

AG7587

GenBank Accession Number:

BC001951

GeneID (NCBI):

5036

UNIPROT ID:

Q9UQ80

Full Name:

proliferation-associated 2G4, 38kDa

Calculated MW:

44 kDa

Observed MW:

42 kDa, 48 kDa

Purification Method:

Antigen affinity purification

Recommended Dilutions:

WB 1:1000-1:6000

IP 0.5-4.0 ug for 1.0-3.0 mg of total protein lysate

IHC 1:50-1:500

IF/ICC 1:200-1:800

Applications

Tested Applications:

WB, IHC, IF/ICC, IP, ELISA

Cited Applications:

WB, IHC, IF, IP, RIP

Species Specificity:

human, mouse, rat

Cited Species:

human

Positive Controls:

WB : HEK-293T cells, HEK-293 cells, rat spleen tissue, HL-60 cells, HeLa cells, Jurkat cells, MCF-7 cells, PC-3 cells

IP : Jurkat cells,

IHC : human breast cancer tissue,

IF/ICC : HepG2 cells, HeLa cells

Note-IHC: suggested antigen retrieval with TE buffer pH 9.0; (*) Alternatively, antigen retrieval may be performed with citrate buffer pH 6.0

Background Information

PA2G4 (EBP1), first identified as an ErbB3 binding protein, is a 38 kDa protein that is widely expressed in cultured cells and tissues. The presence of several functional domains such as a nuclear localization sequence (NLS), LxxLL and LxCxE suggests the involvement of Ebp1 in cell signaling pathways and gene transcription regulation. This antibody is a rabbit polyclonal antibody raised against full length PA2G4 of human origin.

Notable Publications

Author	Pubmed ID	Journal	Application
Roseanne Rosario	36250920	FASEB J	WB,IHC
Sheng Sun	35526051	Cell Biosci	WB,IHC,IF,RIP
Matteo Marchesini	38834613	Nat Commun	WB

Storage

Storage:

Store at -20°C. Stable for one year after shipment.

Storage Buffer:

PBS with 0.02% sodium azide and 50% glycerol pH 7.3.

Aliquoting is unnecessary for -20°C storage

*** 20ul sizes contain 0.1% BSA

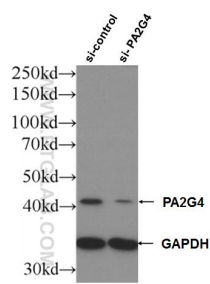
For technical support and original validation data for this product please contact:

T: 1 (888) 4PTGLAB (1-888-478-4522) (toll free in USA), or 1(312) 455-8498 (outside USA)

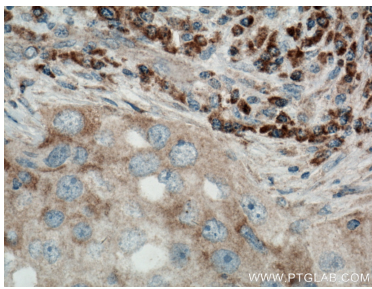
E: proteintech@ptglab.com
W: ptglab.com

This product is exclusively available under Proteintech Group brand and is not available to purchase from any other manufacturer.

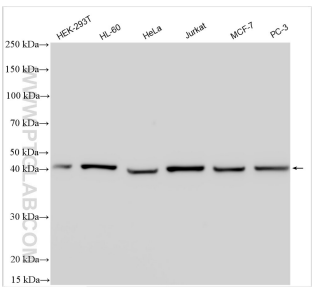
Selected Validation Data



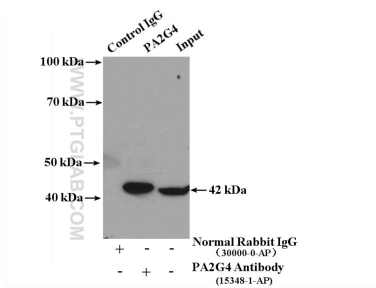
WB result of PA2G4 antibody (15348-1-AP; 1:20000; incubated at room temperature for 1.5 hours) with sh-Control and sh-PA2G4 transfected HEK-293 cells.



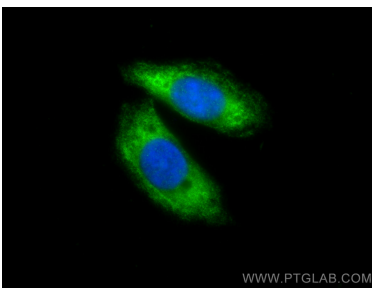
Immunohistochemical analysis of paraffin-embedded human breast cancer tissue slide using 15348-1-AP (PA2G4 antibody) at dilution of 1:200 (under 40x lens. Heat mediated antigen retrieval with Tris-EDTA buffer (pH 9.0).



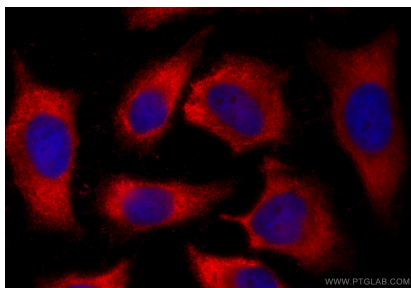
Various lysates were subjected to SDS PAGE followed by western blot with 15348-1-AP (PA2G4 antibody) at dilution of 1:3000 incubated at room temperature for 1.5 hours.



IP result of anti-PA2G4 (IP:15348-1-AP, 4ug; Detection:15348-1-AP 1:1000) with Jurkat cells lysate 3000ug.



Immunofluorescent analysis of (-20°C Ethanol) fixed HepG2 cells using PA2G4 antibody (15348-1-AP) at dilution of 1:400 and Multi-rAb CoraLite ® Plus 488-Goat Anti-Rabbit Recombinant Secondary Antibody (H+L) (RGAR002).



Immunofluorescent analysis of (-20°C Ethanol) fixed HeLa cells using PA2G4 antibody (15348-1-AP) at dilution of 1:400 and CoraLite®594-Conjugated Goat Anti-Rabbit IgG(H+L) (SA00013-4).