

For Research Use Only

# CRIP1 Polyclonal antibody

Catalog Number: 15349-1-AP

Featured Product

4 Publications



## Basic Information

**Catalog Number:**

15349-1-AP

**Size:**

150ul, Concentration: 267 ug/ml by Bradford method using BSA as the standard;

**Source:**

Rabbit

**Isotype:**

IgG

**Immunogen Catalog Number:**

AG7588

**GenBank Accession Number:**

BC002738

**GeneID (NCBI):**

1396

**UNIPROT ID:**

P50238

**Full Name:**

cysteine-rich protein 1 (intestinal)

**Calculated MW:**

9 kDa

**Observed MW:**

8-9 kDa

**Purification Method:**

Antigen affinity purification

**Recommended Dilutions:**

WB 1:500-1:1000

IHC 1:50-1:500

IF/ICC 1:50-1:500

## Applications

**Tested Applications:**

WB, IHC, IF/ICC, ELISA

**Cited Applications:**

WB, IHC, IP, CoIP

**Species Specificity:**

human

**Cited Species:**

human

**Note-IHC: suggested antigen retrieval with TE buffer pH 9.0; (\*) Alternatively, antigen retrieval may be performed with citrate buffer pH 6.0**

**Positive Controls:**

WB : HeLa cells, PC-3 cells

IHC : human stomach cancer tissue,

IF/ICC : HeLa cells,

## Background Information

CRIP1 also known as CRIP, CRP1, belongs to the LIM/double zinc finger protein family. CRIP1 has a unique double zinc finger motif, which is mainly expressed in the intestine, and may be involved in intestinal zinc transport (PMID: 31312368, 1946385). CRIP1 is overexpressed in immune cells of the epithelium and may play an important role in gut immunity (PMID: 27836662).

## Notable Publications

Author	Pubmed ID	Journal	Application
Yujuan Liu	34413913	Dis Markers	WB
Peixia Tang	38199044	EBioMedicine	WB,CoIP
Xiaoling Deng	37224580	Leuk Res	WB,CoIP

## Storage

**Storage:**

Store at -20°C. Stable for one year after shipment.

**Storage Buffer:**

PBS with 0.02% sodium azide and 50% glycerol pH 7.3.

Aliquoting is unnecessary for -20°C storage

\*\*\* 20ul sizes contain 0.1% BSA

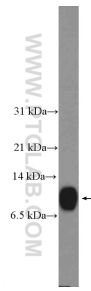
For technical support and original validation data for this product please contact:

T: 1 (888) 4PTGLAB (1-888-478-4522) (toll free in USA), or 1(312) 455-8498 (outside USA)

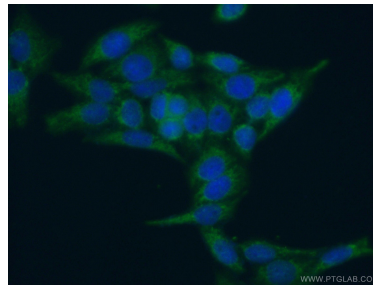
E: proteintech@ptglab.com  
W: ptglab.com

This product is exclusively available under Proteintech Group brand and is not available to purchase from any other manufacturer.

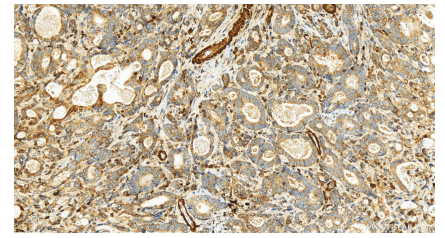
## Selected Validation Data



HeLa cells were subjected to SDS PAGE followed by western blot with 15349-1-AP (CRIP1 Antibody) at dilution of 1:600 incubated at room temperature for 1.5 hours.



Immunofluorescent analysis of (-20°C Ethanol) fixed HeLa cells using 15349-1-AP (CRIP1 antibody) at dilution of 1:50 and Alexa Fluor 488-conjugated AffiniPure Goat Anti-Rabbit IgG(H+L).



Immunohistochemical analysis of paraffin-embedded human stomach cancer tissue slide using 15349-1-AP (CRIP1 antibody) at dilution of 1:200 (under 20x lens). Heat mediated antigen retrieval with Tris-EDTA buffer (pH 9.0).