

For Research Use Only

SAR1A Polyclonal antibody

Catalog Number: 15350-1-AP

Featured Product

7 Publications



Basic Information

Catalog Number:

15350-1-AP

Size:

150ul, Concentration: 333 µg/ml by Nanodrop and 333 µg/ml by Bradford method using BSA as the standard;

Source:

Rabbit

Isotype:

IgG

Immunogen Catalog Number:

AG7596

GenBank Accession Number:

BC003658

GeneID (NCBI):

56681

UNIPROT ID:

Q9NR31

Full Name:

SAR1 homolog A (S. cerevisiae)

Calculated MW:

22 kDa

Observed MW:

23-25 kDa

Purification Method:

Antigen affinity purification

Recommended Dilutions:

WB 1:500-1:2000

IHC 1:20-1:200

Applications

Tested Applications:

WB, IHC, ELISA

Cited Applications:

WB, IP, IHC

Species Specificity:

human, mouse, rat

Cited Species:

human, mouse, rat

Note-IHC: suggested antigen retrieval with TE buffer pH 9.0; (*) Alternatively, antigen retrieval may be performed with citrate buffer pH 6.0

Positive Controls:

WB : mouse liver tissue, HeLa cells, HT-1080 cells

IHC : human hepatocirrhosis tissue, human liver tissue, human skeletal muscle tissue

Notable Publications

Author	Pubmed ID	Journal	Application
Mengyue You	36252341	Redox Biol	WB
Hongxia Li	30400968	Clin Epigenetics	IHC, WB
Ruimin Zhu	31158417	Mol Cell Endocrinol	WB

Storage

Storage:

Store at -20°C. Stable for one year after shipment.

Storage Buffer:

PBS with 0.02% sodium azide and 50% glycerol pH 7.3.

Aliquoting is unnecessary for -20°C storage

*** 20ul sizes contain 0.1% BSA

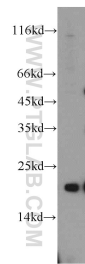
For technical support and original validation data for this product please contact:

T: 1 (888) 4PTGLAB (1-888-478-4522) (toll free in USA), or 1(312) 455-8498 (outside USA)

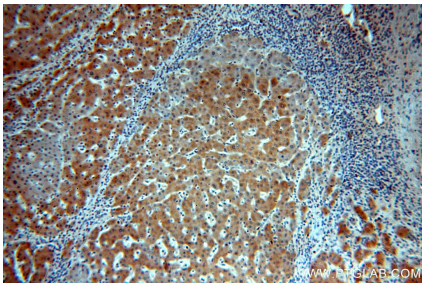
E: proteintech@ptglab.com
W: ptglab.com

This product is exclusively available under Proteintech Group brand and is not available to purchase from any other manufacturer.

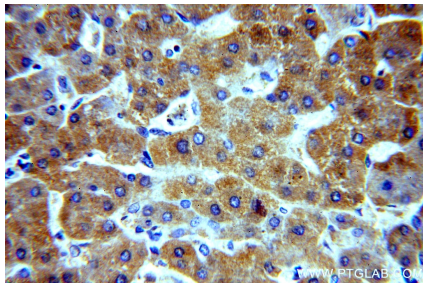
Selected Validation Data



mouse liver tissue were subjected to SDS PAGE followed by western blot with 15350-1-AP (SAR1A antibody) at dilution of 1:500 incubated at room temperature for 1.5 hours.



Immunohistochemical analysis of paraffin-embedded human hepatocirrhosis using 15350-1-AP (SAR1A antibody) at dilution of 1:100 (under 10x lens).



Immunohistochemical analysis of paraffin-embedded human hepatocirrhosis using 15350-1-AP (SAR1A antibody) at dilution of 1:100 (under 40x lens).