

For Research Use Only

RPS27 Polyclonal antibody

Catalog Number: 15355-1-AP

Featured Product

6 Publications



Basic Information

Catalog Number:

15355-1-AP

Size:

150ul, Concentration: 487 ug/ml by Nanodrop and 487 ug/ml by Bradford method using BSA as the standard;

Source:

Rabbit

Isotype:

IgG

Immunogen Catalog Number:

AG7601

GenBank Accession Number:

BC002658

GeneID (NCBI):

6232

UNIPROT ID:

P42677

Full Name:

ribosomal protein S27

Calculated MW:

9 kDa

Observed MW:

9 kDa

Purification Method:

Antigen affinity purification

Recommended Dilutions:

WB 1:1000-1:6000

IP 0.5-4.0 ug for 1.0-3.0 mg of total protein lysate

IHC 1:20-1:200

IF/ICC 1:200-1:800

Applications

Tested Applications:

WB, IHC, IF/ICC, IP, ELISA

Cited Applications:

WB

Species Specificity:

human

Cited Species:

human, mouse

Note-IHC: suggested antigen retrieval with TE buffer pH 9.0; (*) Alternatively, antigen retrieval may be performed with citrate buffer pH 6.0

Positive Controls:

WB : HepG2 cells, SGC-7901 cells, Jurkat cells

IP : SGC-7901 cells,

IHC : human endometrial cancer tissue,

IF/ICC : HeLa cells,

Notable Publications

Author	Pubmed ID	Journal	Application
Hyun Ju Lee	29129916	Nat Commun	WB
Isabel Saez	31365120	FEBS Lett	WB
Dameng Li	38365771	Cancer Metab	WB

Storage

Storage:

Store at -20°C. Stable for one year after shipment.

Storage Buffer:

PBS with 0.02% sodium azide and 50% glycerol pH 7.3.

Aliquoting is unnecessary for -20°C storage

*** 20ul sizes contain 0.1% BSA

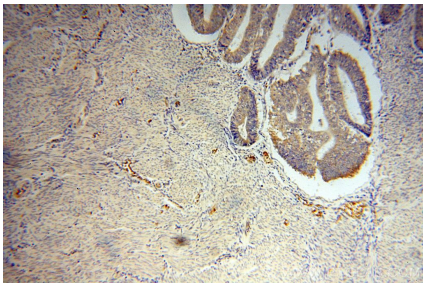
For technical support and original validation data for this product please contact:

T: 1 (888) 4PTGLAB (1-888-478-4522) (toll free in USA), or 1(312) 455-8498 (outside USA)

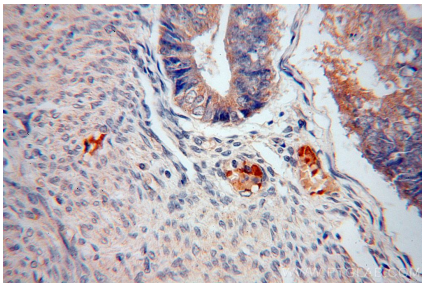
E: proteintech@ptglab.com
W: ptglab.com

This product is exclusively available under Proteintech Group brand and is not available to purchase from any other manufacturer.

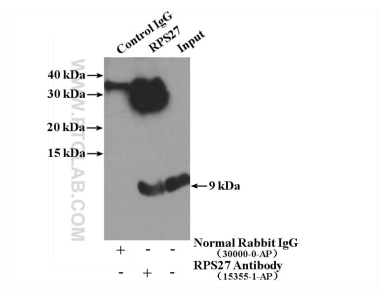
Selected Validation Data



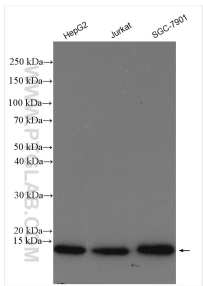
Immunohistochemical analysis of paraffin-embedded human endometrial cancer using 15355-1-AP (RPS27 antibody) at dilution of 1:50 (under 10x lens).



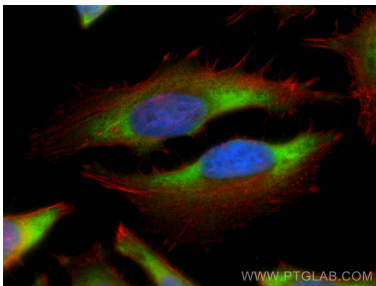
Immunohistochemical analysis of paraffin-embedded human endometrial cancer using 15355-1-AP (RPS27 antibody) at dilution of 1:50 (under 40x lens).



IP result of anti-RPS27 (IP:15355-1-AP, 4ug; Detection:15355-1-AP 1:500) with SGC-7901 cells lysate 2400ug.



Various lysates were subjected to SDS PAGE followed by western blot with 15355-1-AP (RPS27 antibody) at dilution of 1:3000 incubated at room temperature for 1.5 hours.



Immunofluorescent analysis of (-20°C Ethanol) fixed HeLa cells using RPS27 antibody (15355-1-AP) at dilution of 1:400 and CoraLite®488-Conjugated AffiniPure Goat Anti-Rabbit IgG(H+L), CL594-Phalloidin (red).