

For Research Use Only

RLBP1 Polyclonal antibody

Catalog Number: 15356-1-AP **15 Publications**



Basic Information

| | | |
|---|--|--|
| Catalog Number: 15356-1-AP | GenBank Accession Number: BC004199 | Purification Method: Antigen affinity purification |
| Size: 150ul, Concentration: 300 µg/ml by Nanodrop and 213 µg/ml by Bradford method using BSA as the standard; | GeneID (NCBI): 6017 | Recommended Dilutions: WB 1:500-1:2000 IHC 1:20-1:200 |
| Source: Rabbit | UNIPROT ID: P12271 | |
| Isotype: IgG | Full Name: retinaldehyde binding protein 1 | |
| Immunogen Catalog Number: AG7602 | Calculated MW: 36 kDa | |
| | Observed MW: 36 kDa | |

Applications

| | |
|--|--|
| Tested Applications: IF, IHC, WB, ELISA | Positive Controls: WB : mouse eye tissue, HepG2 cells, mouse retina tissue, rat eye tissue IHC : human eye tissue, mouse eye tissue |
| Cited Applications: IF, IHC, WB | |
| Species Specificity: human, mouse, rat | |
| Cited Species: human, rat, mouse, zebrafish | |
| Note-IHC: suggested antigen retrieval with TE buffer pH 9.0; (*) Alternatively, antigen retrieval may be performed with citrate buffer pH 6.0 | |

Notable Publications

| Author | Pubmed ID | Journal | Application |
|-------------|-----------|--------------------|-------------|
| Xiaoman Zhu | 36096985 | Cell Death Dis | WB,IF |
| Ting Zhang | 36064625 | Stem Cell Res Ther | IF |
| Haibin Tian | 36185374 | iScience | IF |

Storage

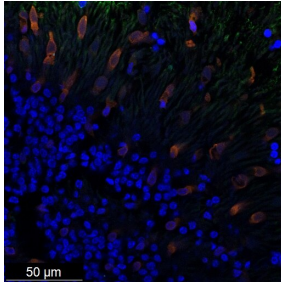
Storage:
Store at -20°C. Stable for one year after shipment.
Storage Buffer:
PBS with 0.02% sodium azide and 50% glycerol pH 7.3.
Aliquoting is unnecessary for -20°C storage

*** 20ul sizes contain 0.1% BSA

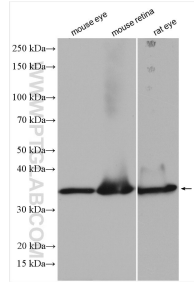
For technical support and original validation data for this product please contact:
T: 1 (888) 4PTGLAB (1-888-478-4522) (toll free in USA), or 1(312) 455-8498 (outside USA)
E: proteintech@ptglab.com
W: ptglab.com

This product is exclusively available under Proteintech Group brand and is not available to purchase from any other manufacturer.

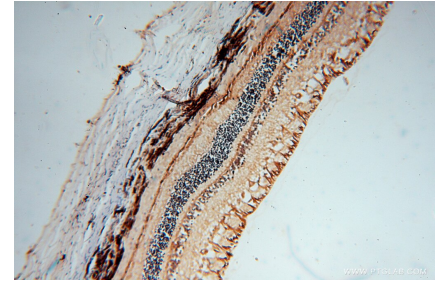
Selected Validation Data



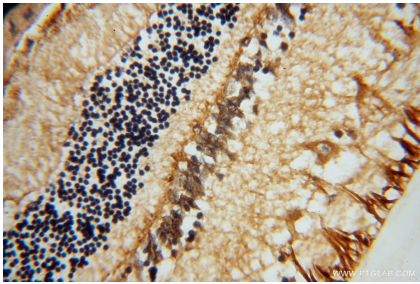
Retinal organoids (day 250) generated from human induced pluripotent stem cells (iPSCs) and fixed with 4% PFA. Stained for Tubulin beta 3/TUJ1 using 66375-1-Ig at 1:500 dilution (green) and CRALBP using 15356-1-AP at 1:400 (red). Nuclear stain DAPI (blue). Scale bar = 50 μm. Data generated by Alessandro Bellapianta at Johannes Kepler Universitat, Austria.



Various lysates were subjected to SDS PAGE followed by western blot with 15356-1-AP (RLBP1 antibody) at dilution of 1:1000 incubated at room temperature for 1.5 hours.



Immunohistochemical analysis of paraffin-embedded human eye using 15356-1-AP (RLBP1 antibody) at dilution of 1:50 (under 10x lens).



Immunohistochemical analysis of paraffin-embedded human eye using 15356-1-AP (RLBP1 antibody) at dilution of 1:50 (under 40x lens).