

For Research Use Only

# SNUPN Polyclonal antibody

Catalog Number: 15358-1-AP **2 Publications**



## Basic Information

<b>Catalog Number:</b> 15358-1-AP	<b>GenBank Accession Number:</b> BC004203	<b>Purification Method:</b> Antigen affinity purification
<b>Size:</b> 150ul , Concentration: 260 ug/ml by Nanodrop and 213 ug/ml by Bradford method using BSA as the standard;	<b>GeneID (NCBI):</b> 10073	<b>Recommended Dilutions:</b> WB 1:1000-1:4000
<b>Source:</b> Rabbit	<b>UNIPROT ID:</b> O95149	<b>IHC 1:20-1:200</b>
<b>Isotype:</b> IgG	<b>Full Name:</b> snurportin 1	<b>IF/ICC 1:10-1:100</b>
<b>Immunogen Catalog Number:</b> AG7604	<b>Calculated MW:</b> 41 kDa	
	<b>Observed MW:</b> 41 kDa	

## Applications

<b>Tested Applications:</b> WB, IHC, IF/ICC, ELISA	<b>Positive Controls:</b>
<b>Cited Applications:</b> WB, IF	<b>WB :</b> HeLa cells,
<b>Species Specificity:</b> human, mouse, rat	<b>IHC :</b> human brain tissue,
<b>Cited Species:</b> human	<b>IF/ICC :</b> MCF-7 cells, HeLa cells
<b>Note-IHC: suggested antigen retrieval with TE buffer pH 9.0; (*) Alternatively, antigen retrieval may be performed with citrate buffer pH 6.0</b>	

## Notable Publications

Author	Pubmed ID	Journal	Application
Simona Rossi	32027933	Neurobiol Dis	WB
Marwan Nashabat	38413582	Nat Commun	WB,IF

## Storage

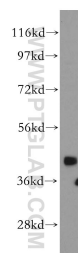
**Storage:**  
Store at -20°C. Stable for one year after shipment.  
**Storage Buffer:**  
PBS with 0.02% sodium azide and 50% glycerol pH 7.3.  
Aliquoting is unnecessary for -20°C storage

\*\*\* 20ul sizes contain 0.1% BSA

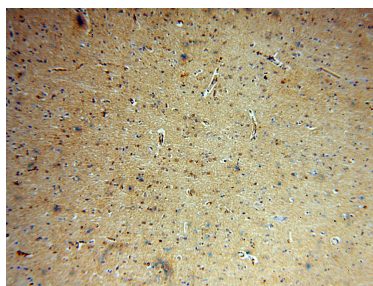
For technical support and original validation data for this product please contact:  
T: 1 (888) 4PTGLAB (1-888-478-4522) (toll free in USA), or 1(312) 455-8498 (outside USA)  
E: [proteintech@ptglab.com](mailto:proteintech@ptglab.com)  
W: [ptglab.com](http://ptglab.com)

This product is exclusively available under Proteintech Group brand and is not available to purchase from any other manufacturer.

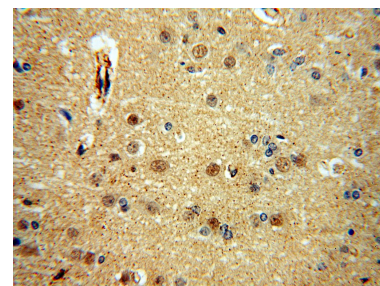
## Selected Validation Data



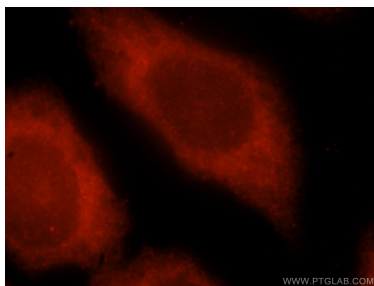
HeLa cells were subjected to SDS PAGE followed by western blot with 15358-1-AP (SNUPN antibody) at dilution of 1:2000 incubated at room temperature for 1.5 hours.



Immunohistochemical analysis of paraffin-embedded human brain using 15358-1-AP (SNUPN antibody) at dilution of 1:100 (under 10x lens).



Immunohistochemical analysis of paraffin-embedded human brain using 15358-1-AP (SNUPN antibody) at dilution of 1:100 (under 40x lens).



Immunofluorescent analysis of MCF-7 cells, using SNUPN antibody 15358-1-AP at 1:25 dilution and Rhodamine-labeled goat anti-rabbit IgG (red).