

For Research Use Only

# TRIB2 Polyclonal antibody

Catalog Number: 15359-1-AP

Featured Product

2 Publications



## Basic Information

### Catalog Number:

15359-1-AP

### Size:

150ul, Concentration: 133 µg/ml by Bradford method using BSA as the standard;

### Source:

Rabbit

### Isotype:

IgG

### Immunogen Catalog Number:

AG7605

### GenBank Accession Number:

BC002637

### GeneID (NCBI):

28951

### Full Name:

tribbles homolog 2 (Drosophila)

### Calculated MW:

39 kDa

### Observed MW:

46 kDa

### Purification Method:

Antigen affinity purification

### Recommended Dilutions:

WB 1:500-1:2000

IHC 1:20-1:200

## Applications

### Tested Applications:

IHC, WB, ELISA

### Cited Applications:

IF, WB

### Species Specificity:

human, mouse, rat

### Cited Species:

human, mouse

**Note-IHC: suggested antigen retrieval with TE buffer pH 9.0; (\*) Alternatively, antigen retrieval may be performed with citrate buffer pH 6.0**

### Positive Controls:

**WB**: HeLa cells, Jurkat cells, mouse thymus tissue, K-562 cells

**IHC**: human placenta tissue, human brain tissue, human heart tissue, human kidney tissue, human liver tissue, human lung tissue, human ovary tissue, human skin tissue, human spleen tissue, human testis tissue

## Background Information

TRIB2, also named as TRB2, belongs to the protein kinase superfamily, CAMK Ser/Thr protein kinase family and Tribbles subfamily. TRIB2 interacts with MAPK kinases and regulates activation of MAP kinases. It does not display kinase activity. Antibodies against TRIB2 are present in sera from patients with autoimmune uveitis (uniprot). TRIB2 is enriched in hypocretin neurons. Sera from narcolepsy patients with cataplexy had higher Trib2-specific antibody titers compared with either normal controls or patients with idiopathic hypersomnia, multiple sclerosis, or other inflammatory neurological disorders.

## Notable Publications

Author	Pubmed ID	Journal	Application
Eun Kyoung Do	29170476	Exp Mol Med	WB, IF
Wan Yun Ho	37920668	iScience	WB, IF

## Storage

### Storage:

Store at -20°C. Stable for one year after shipment.

### Storage Buffer:

PBS with 0.02% sodium azide and 50% glycerol pH 7.3.

Aliquoting is unnecessary for -20°C storage

\*\*\* 20ul sizes contain 0.1% BSA

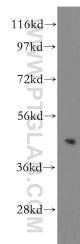
For technical support and original validation data for this product please contact:

T: 1 (888) 4PTGLAB (1-888-478-4522) (toll free in USA), or 1(312) 455-8498 (outside USA)

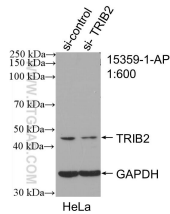
E: [proteintech@ptglab.com](mailto:proteintech@ptglab.com)  
W: [ptglab.com](http://ptglab.com)

This product is exclusively available under Proteintech Group brand and is not available to purchase from any other manufacturer.

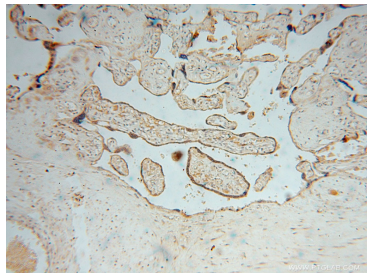
Selected Validation Data



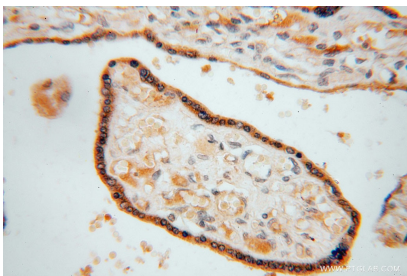
HeLa cells were subjected to SDS PAGE followed by western blot with 15359-1-AP (TRIB2 antibody) at dilution of 1:500 incubated at room temperature for 1.5 hours.



WB result of TRIB2 antibody (15359-1-AP; 1:600; incubated at room temperature for 1.5 hours) with sh-Control and sh-TRIB2 transfected HeLa cells.



Immunohistochemical analysis of paraffin-embedded human placenta using 15359-1-AP (TRIB2 antibody) at dilution of 1:50 (under 10x lens).



Immunohistochemical analysis of paraffin-embedded human placenta using 15359-1-AP (TRIB2 antibody) at dilution of 1:50 (under 40x lens).