

For Research Use Only

TAF1A Polyclonal antibody

Catalog Number: 15362-1-AP



Basic Information

Catalog Number:

15362-1-AP

Size:

150ul, Concentration: 700 µg/ml by Nanodrop and 233 µg/ml by Bradford method using BSA as the standard;

Source:

Rabbit

Isotype:

IgG

Immunogen Catalog Number:

AG8059

GenBank Accession Number:

BC013808

GeneID (NCBI):

9015

UNIPROT ID:

Q15573

Full Name:

TATA box binding protein (TBP)-associated factor, RNA polymerase I, A, 48kDa

Calculated MW:

53 kDa

Observed MW:

48-52 kDa

Purification Method:

Antigen affinity purification

Recommended Dilutions:

WB 1:1000-1:6000

Applications

Tested Applications:

WB, ELISA

Species Specificity:

human

Positive Controls:

WB: A431 cells, A549 cells, HeLa cells, HepG2 cells

Background Information

TAF1A, also named as TAFI48 and SL1, is a component of the transcription factor SL1/TIF-IB complex. TAF1A has two isoform with MW 40 kDa and 48-52 kDa.

Storage

Storage:

Store at -20°C. Stable for one year after shipment.

Storage Buffer:

PBS with 0.02% sodium azide and 50% glycerol, pH7.3

Aliquoting is unnecessary for -20°C storage

*** 20ul sizes contain 0.1% BSA

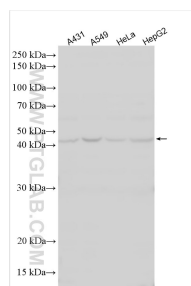
For technical support and original validation data for this product please contact:

T: 1 (888) 4PTGLAB (1-888-478-4522) (toll free in USA), or 1(312) 455-8498 (outside USA)

E: proteintech@ptglab.com
W: ptglab.com

This product is exclusively available under Proteintech Group brand and is not available to purchase from any other manufacturer.

Selected Validation Data



Various lysates were subjected to SDS PAGE followed by western blot with 15362-1-AP (TAF1A antibody) at dilution of 1:3000 incubated at room temperature for 1.5 hours.