

For Research Use Only

# CEL Polyclonal antibody

Catalog Number: 15384-1-AP

Featured Product

5 Publications



## Basic Information

<b>Catalog Number:</b> 15384-1-AP	<b>GenBank Accession Number:</b> BC042510	<b>Purification Method:</b> Antigen affinity purification
<b>Size:</b> 150ul , Concentration: 500 µg/ml by Nanodrop and 233 µg/ml by Bradford method using BSA as the standard;	<b>GeneID (NCBI):</b> 1056	<b>Recommended Dilutions:</b> WB 1:500-1:3000 IHC 1:50-1:500 IF 1:50-1:500
<b>Source:</b> Rabbit	<b>Full Name:</b> carboxyl ester lipase (bile salt-stimulated lipase)	
<b>Isotype:</b> IgG	<b>Calculated MW:</b> 79 kDa	
<b>Immunogen Catalog Number:</b> AG5262	<b>Observed MW:</b> 67 kDa	

## Applications

### Tested Applications:

IF, IHC, WB, ELISA

### Cited Applications:

IF, IHC, WB

### Species Specificity:

human, mouse, rat

### Cited Species:

HUMAN, mouse

**Note-IHC: suggested antigen retrieval with TE buffer pH 9.0; (\*) Alternatively, antigen retrieval may be performed with citrate buffer pH 6.0**

### Positive Controls:

**WB** : human liver tissue, HeLa cells, mouse heart tissue, mouse liver tissue

**IHC** : human pancreas cancer tissue,

**IF** : human pancreas cancer tissue, HeLa cells

## Background Information

Bile salt-activated lipase, previously named cholesterol esterase or bile salt-stimulated (or dependent) lipase, is a 74 kDa lipolytic enzyme capable of hydrolyzing cholesteryl esters, tri-, di-, and mono-acylglycerols, phospholipids, lysophospholipids, and ceramide (PMID:12454261). The same enzyme is present as a major protein in milk and as a minor constituent in liver, activated macrophages, and endothelial cells (PMID:11733511). Defects in CEL are a cause of maturity-onset diabetes of the young type 8 with exocrine dysfunction (MODY8) (PMID:16369531). The full length protein has 11 glycosylation sites. It has 2 isoforms produced by alternative splicing.

## Notable Publications

Author	Pubmed ID	Journal	Application
Minghe Zhou	34643375	ACS Biomater Sci Eng	WB,IF
Matthew J Kolar	27509211	Biochemistry	WB
Xiao-Tong Mao	35398595	Cell Mol Gastroenterol Hepatol	WB,IHC

## Storage

### Storage:

Store at -20°C. Stable for one year after shipment.

### Storage Buffer:

PBS with 0.02% sodium azide and 50% glycerol pH 7.3.

Aliquoting is unnecessary for -20°C storage

\*\*\* 20ul sizes contain 0.1% BSA

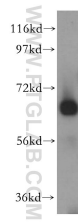
For technical support and original validation data for this product please contact:

T: 1 (888) 4PTGLAB (1-888-478-4522) (toll free in USA), or 1(312) 455-8498 (outside USA)

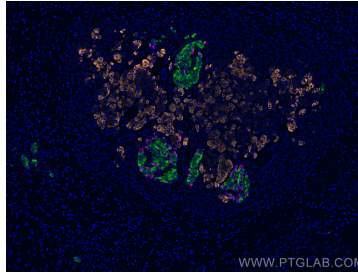
E: proteintech@ptglab.com  
W: ptglab.com

This product is exclusively available under Proteintech Group brand and is not available to purchase from any other manufacturer.

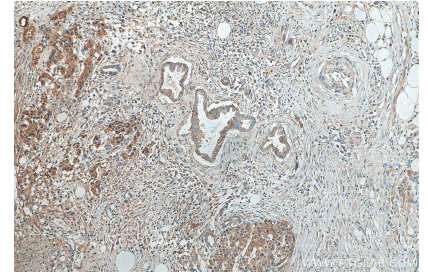
## Selected Validation Data



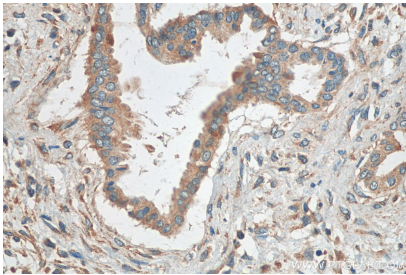
human liver tissue were subjected to SDS PAGE followed by western blot with 15384-1-AP (CEL antibody) at dilution of 1:500 incubated at room temperature for 1.5 hours.



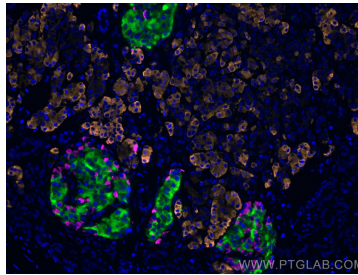
Immunofluorescent analysis of (4% PFA) fixed human pancreas cancer tissue using CEL antibody (15384-1-AP) at dilution of 1:200 and TRITC-Goat anti-Rabbit IgG, CoraLite® Plus 647 Glucagon antibody (CL647-15954, Magenta), CoraLite®488 INS antibody (CL488-66198, Clone: 4B6A7, green).



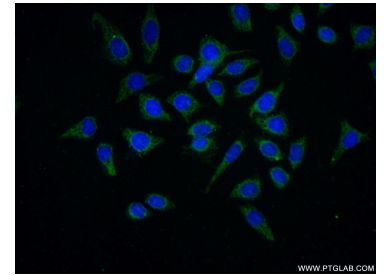
Immunohistochemical analysis of paraffin-embedded human pancreas cancer tissue slide using 15384-1-AP (CEL antibody) at dilution of 1:200 (under 10x lens). Heat mediated antigen retrieval with Tris-EDTA buffer (pH 9.0).



Immunohistochemical analysis of paraffin-embedded human pancreas cancer tissue slide using 15384-1-AP (CEL antibody) at dilution of 1:200 (under 40x lens). Heat mediated antigen retrieval with Tris-EDTA buffer (pH 9.0).



Immunofluorescent analysis of (4% PFA) fixed human pancreas cancer tissue using CEL antibody (15384-1-AP) at dilution of 1:200 and TRITC-Goat anti-Rabbit IgG, CoraLite® Plus 647 Glucagon antibody (CL647-15954, Magenta), CoraLite®488 INS antibody (CL488-66198, Clone: 4B6A7, green).



Immunofluorescent analysis of (-20°C Ethanol) fixed HeLa cells using 15384-1-AP (CEL antibody) at dilution of 1:25 and Alexa Fluor 488-conjugated AffiniPure Goat Anti-Rabbit IgG(H+L).