

For Research Use Only

# GNB3 Polyclonal antibody

Catalog Number: 15388-1-AP



## Basic Information

|  |   |  |
|--|---|--|
| <b>Catalog Number:</b><br>15388-1-AP   | <b>GenBank Accession Number:</b><br>BC002454  | <b>Purification Method:</b><br>Antigen affinity purification                           |
| <b>Size:</b><br>150ul , Concentration: 750 µg/ml by Nanodrop and 447 µg/ml by Bradford method using BSA as the standard; | <b>GeneID (NCBI):</b><br>2784   | <b>Recommended Dilutions:</b><br>WB 1:1000-1:8000<br>IHC 1:250-1:1000<br>IF 1:50-1:500 |
| <b>Source:</b><br>Rabbit   | <b>Full Name:</b><br>guanine nucleotide binding protein (G protein), beta polypeptide 3 |  |
| <b>Isotype:</b><br>IgG   | <b>Calculated MW:</b><br>37 kDa   |  |
| <b>Immunogen Catalog Number:</b><br>AG7050   | <b>Observed MW:</b><br>35-37 kDa  |  |

## Applications

### Tested Applications:

IF, IHC, WB, ELISA

### Species Specificity:

human, mouse, rat

**Note-IHC: suggested antigen retrieval with TE buffer pH 9.0; (\*) Alternatively, antigen retrieval may be performed with citrate buffer pH 6.0**

### Positive Controls:

**WB :** L02 cells, HepG2 cells, mouse brain tissue, rat brain tissue

**IHC :** human kidney tissue, human brain tissue, human lung tissue, human ovary tissue, human testis tissue

**IF :** HepG2 cells,

## Background Information

Guanine nucleotide-binding proteins (g proteins) are involved as a modulator or transducer in various transmembrane signaling systems, by integrating signals between receptors and effector proteins. G proteins are composed of an alpha, a beta, and a gamma subunit. This gene encodes a 34 kd beta subunit, being expressed in all tissues. Beta subunits are important regulators of alpha subunits, as well as of certain signal transduction receptors and effectors.

## Storage

### Storage:

Store at -20°C. Stable for one year after shipment.

### Storage Buffer:

PBS with 0.02% sodium azide and 50% glycerol pH 7.3.

Aliquoting is unnecessary for -20°C storage

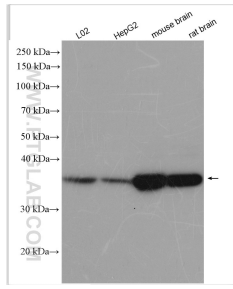
For technical support and original validation data for this product please contact:

T: 1 (888) 4PTGLAB (1-888-478-4522) (toll free in USA), or 1(312) 455-8498 (outside USA)

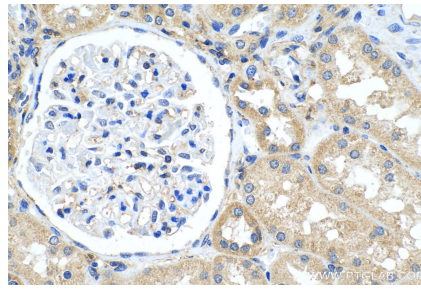
E: [proteintech@ptglab.com](mailto:proteintech@ptglab.com)  
W: [ptglab.com](http://ptglab.com)

**This product is exclusively available under Proteintech Group brand and is not available to purchase from any other manufacturer.**

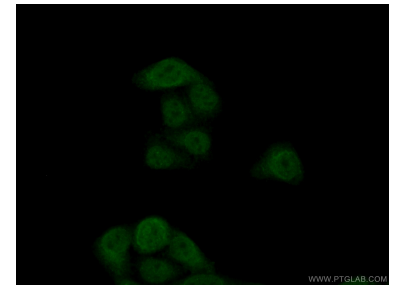
## Selected Validation Data



L02 cells were subjected to SDS PAGE followed by western blot with 15388-1-AP (GNB3 antibody) at dilution of 1:4000 incubated at room temperature for 1.5 hours.



Immunohistochemical analysis of paraffin-embedded human kidney tissue slide using 15388-1-AP (GNB3 antibody) at dilution of 1:500 (under 40x lens). Heat mediated antigen retrieval with Tris-EDTA buffer (pH 9.0).



Immunofluorescent analysis of (10% Formaldehyde) fixed HepG2 cells using 15388-1-AP (GNB3 antibody) at dilution of 1:50 and Alexa Fluor 488-conjugated AffiniPure Goat Anti-Rabbit IgG(H+L).