

For Research Use Only

MYL10 Polyclonal antibody, PBS Only

Catalog Number: 15396-1-PBS



Basic Information

Catalog Number: 15396-1-PBS	GenBank Accession Number: BC002778	Purification Method: Antigen affinity purification
Size: 100ug , Concentration: 1 mg/ml by Nanodrop;	GeneID (NCBI): 93408	
Source: Rabbit	UNIPROT ID: Q9BUA6	
Isotype: IgG	Full Name: myosin, light chain 10, regulatory	
Immunogen Catalog Number: AG7594	Calculated MW: 25 kDa	
	Observed MW: 20 kDa	

Applications

Tested Applications:
WB, Indirect ELISA

Species Specificity:
human, mouse, rat

Background Information

In non-muscle cells, MLCs are either regulatory (RLC) or essential ELCs. The human RLC gene family encompasses MYL2, MYL5, MYL9, MYL10, MYL11, MYL12A, and MYL12B, with the ELC gene family including MYL1, MYL3, MYL4, and MYL6 (PMID: 39768172). MYL10, also known as PLRLC, encodes for an RLC that might be a lymphocyte specific precursor. MYL10 is a regulatory myosin light chain that is expressed in pre-B cells from adult bone marrow, but not those from fetal liver, upon exposure to IL-7 (PMID: 1628631).

Storage

Storage:
Store at -80°C.

Storage Buffer:
PBS only, pH7.3

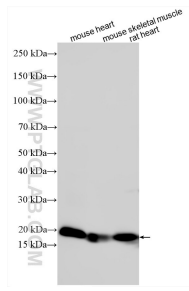
For technical support and original validation data for this product please contact:

T: 1 (888) 4PTGLAB (1-888-478-4522) (toll free in USA), or 1(312) 455-8498 (outside USA)

E: proteintech@ptglab.com
W: ptglab.com

This product is exclusively available under Proteintech Group brand and is not available to purchase from any other manufacturer.

Selected Validation Data



Various lysates were subjected to SDS PAGE followed by western blot with 15396-1-AP (MYL10 antibody) at dilution of 1:10000 incubated at room temperature for 1.5 hours. This data was developed using the same antibody clone with 15396-1-PBS in a different storage buffer formulation.