

For Research Use Only

SEC13 Polyclonal antibody

Catalog Number: 15397-1-AP

Featured Product

18 Publications



Basic Information

Catalog Number:

15397-1-AP

Size:

150ul, Concentration: 450 ug/ml by Nanodrop and 220 ug/ml by Bradford method using BSA as the standard;

Source:

Rabbit

Isotype:

IgG

Immunogen Catalog Number:

AG7610

GenBank Accession Number:

BC002634

GeneID (NCBI):

6396

UNIPROT ID:

P55735

Full Name:

SEC13 homolog (S. cerevisiae)

Calculated MW:

36 kDa

Observed MW:

36 kDa

Purification Method:

Antigen affinity purification

Recommended Dilutions:

WB 1:5000-1:50000

IP 0.5-4.0 ug for 1.0-3.0 mg of total protein lysate

IHC 1:200-1:800

IF/ICC 1:200-1:800

Applications

Tested Applications:

WB, IHC, IF/ICC, IP, ELISA

Cited Applications:

WB, IF

Species Specificity:

human, mouse, rat

Cited Species:

human, mouse, rat

Note-IHC: suggested antigen retrieval with TE buffer pH 9.0; (*) Alternatively, antigen retrieval may be performed with citrate buffer pH 6.0

Positive Controls:

WB: HEK-293 cells, HepG2 cells, Jurkat cells, L02 cells, RAW 264.7 cells, J774A.1 cells

IP: HepG2 cells,

IHC: mouse brain tissue, human kidney tissue, human lung tissue, human ovary tissue, human placenta tissue, human skin tissue, human testis tissue, mouse liver tissue

IF/ICC: HepG2 cells,

Background Information

SEC13 is a component of the nuclear pore complex (NPC) and the COPII coat. It is required for vesicle biogenesis from endoplasmic reticulum during the transport of proteins. Shuttling of SEC13 between the nucleus and the cytoplasm may couple and regulate functions between these two compartments. (PMID: 14517296; 16407955)

Notable Publications

Author	Pubmed ID	Journal	Application
Jacqueline Morales	36282590	JCI Insight	WB
Mengyue You	36252341	Redox Biol	WB
C Teodorof	24825317	Neurobiol Dis	

Storage

Storage:

Store at -20°C. Stable for one year after shipment.

Storage Buffer:

PBS with 0.02% sodium azide and 50% glycerol, pH7.3

Aliquoting is unnecessary for -20°C storage

*** 20ul sizes contain 0.1% BSA

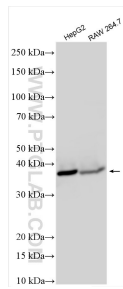
For technical support and original validation data for this product please contact:

T: 1 (888) 4PTGLAB (1-888-478-4522) (toll free in USA), or 1(312) 455-8498 (outside USA)

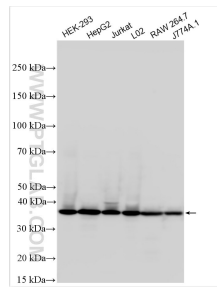
E: proteintech@ptglab.com
W: ptglab.com

This product is exclusively available under Proteintech Group brand and is not available to purchase from any other manufacturer.

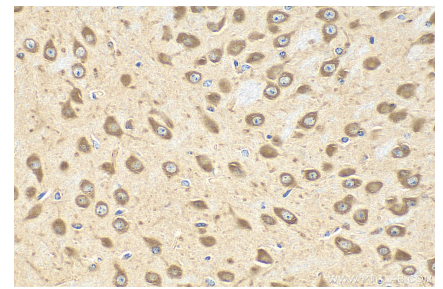
Selected Validation Data



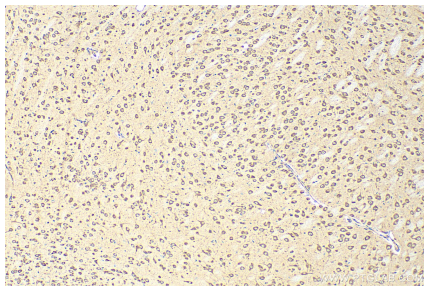
Various lysates were subjected to SDS PAGE followed by western blot with 15397-1-AP (SEC13 antibody) at dilution of 1:6000 incubated at room temperature for 1.5 hours.



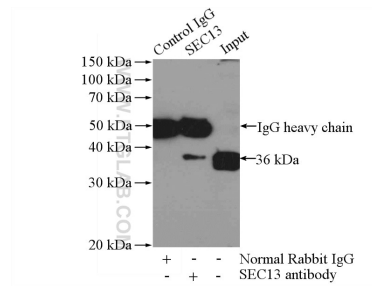
Various lysates were subjected to SDS PAGE followed by western blot with 15397-1-AP (SEC13 antibody) at dilution of 1:10000 incubated at room temperature for 1.5 hours.



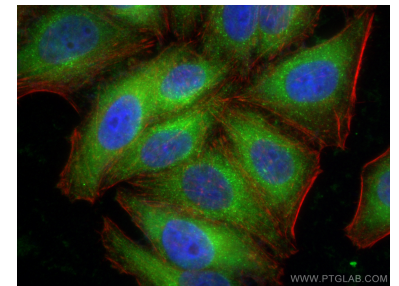
Immunohistochemical analysis of paraffin-embedded mouse brain tissue slide using 15397-1-AP (SEC13 antibody) at dilution of 1:400 (under 40x lens). Heat mediated antigen retrieval with Tris-EDTA buffer (pH 9.0).



Immunohistochemical analysis of paraffin-embedded mouse brain tissue slide using 15397-1-AP (SEC13 antibody) at dilution of 1:400 (under 10x lens). Heat mediated antigen retrieval with Tris-EDTA buffer (pH 9.0).



IP result of anti-SEC13 (IP:15397-1-AP, 3ug; Detection:15397-1-AP 1:1000) with HepG2 cells lysate 3200ug.



Immunofluorescent analysis of (-20°C Ethanol) fixed HepG2 cells using SEC13 antibody (15397-1-AP) at dilution of 1:400 and CoraLite®488-Conjugated AffiniPure Goat Anti-Rabbit IgG(H+L) (SA00013-2), CL594-Phalloidin (red).