

For Research Use Only

PPAT Polyclonal antibody

Catalog Number: 15401-1-AP

Featured Product

22 Publications



Basic Information

Catalog Number: 15401-1-AP	GenBank Accession Number: BC004200	Purification Method: Antigen affinity purification
Size: 150ul , Concentration: 750 µg/ml by Nanodrop and 327 µg/ml by Bradford method using BSA as the standard;	GeneID (NCBI): 5471	Recommended Dilutions: WB 1:2000-1:10000 IP 0.5-4.0 ug for 1.0-3.0 mg of total protein lysate
Source: Rabbit	Full Name: phosphoribosyl pyrophosphate amidotransferase	
Isotype: IgG	Calculated MW: 57 kDa	
Immunogen Catalog Number: AG7618	Observed MW: 50-56 kDa	

Applications

Tested Applications: IP, WB, ELISA	Positive Controls: WB : HEK-293 cells, HepG2 cells IP : HepG2 cells,
Cited Applications: WB	
Species Specificity: human, mouse, rat	
Cited Species: human, rat, mouse	

Background Information

Notable Publications

Author	Pubmed ID	Journal	Application
Yuanliang Yan	30216081	Mol Pharm	WB
Martin P Ogrodzinski	33115804	Cancer Res	WB
Deshi Dong	25310017	Food Funct	WB

Storage

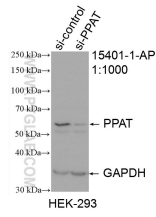
Storage:
Store at -20°C. Stable for one year after shipment.
Storage Buffer:
PBS with 0.02% sodium azide and 50% glycerol pH 7.3.
Aliquoting is unnecessary for -20°C storage

*** 20ul sizes contain 0.1% BSA

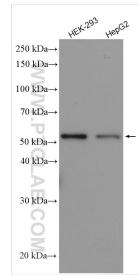
For technical support and original validation data for this product please contact:
T: 1 (888) 4PTGLAB (1-888-478-4522) (toll free in USA), or 1(312) 455-8498 (outside USA) E: proteintech@ptglab.com W: ptglab.com

This product is exclusively available under Proteintech Group brand and is not available to purchase from any other manufacturer.

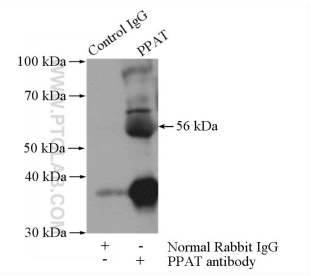
Selected Validation Data



WB result of PPAT antibody (15401-1-AP; 1:1000; incubated at room temperature for 1.5 hours) with sh-Control and sh-PPAT transfected HEK-293 cells.



Various lysates were subjected to SDS PAGE followed by western blot with 15401-1-AP (PPAT antibody) at dilution of 1:5000 incubated at room temperature for 1.5 hours.



IP Result of anti-PPAT (IP:15401-1-AP, 4 μ g; Detection:15401-1-AP 1:500) with HepG2 cells lysate 2400 μ g.