

For Research Use Only

USP30 Polyclonal antibody

Catalog Number: 15402-1-AP

2 Publications



Basic Information

Catalog Number: 15402-1-AP	GenBank Accession Number: BC004868	Purification Method: Antigen affinity purification
Size: 150ul , Concentration: 900 ug/ml by Nanodrop;	GeneID (NCBI): 84749	Recommended Dilutions: WB 1:500-1:2000
Source: Rabbit	UNIPROT ID: Q70CQ3	IHC 1:800-1:3200
Isotype: IgG	Full Name: ubiquitin specific peptidase 30	IF/ICC 1:200-1:800
Immunogen Catalog Number: AG7620	Calculated MW: 58.5 kDa	
	Observed MW: 59-67 kDa	

Applications

Tested Applications: WB, IHC, IF/ICC, ELISA	Positive Controls:
Cited Applications: WB, IF	WB : Daudi cells, HepG2 cells, hTERT-RPE1 cells, mouse kidney tissue, rat kidney tissue
Species Specificity: human, mouse, rat	IHC : human colon cancer tissue, human liver cancer tissue
Cited Species: human, mouse	IF/ICC : HepG2 cells, A549 cells, HeLa cells
Note-IHC: suggested antigen retrieval with TE buffer pH 9.0; (*) Alternatively, antigen retrieval may be performed with citrate buffer pH 6.0	

Background Information

USP30, a mitochondrion-localized deubiquitylase, regulates mitophagy. Mitochondrial damage stimulates parkin to assemble Lys 6, Lys 11 and Lys 63 chains on mitochondria, and that USP30 is a ubiquitin-specific deubiquitylase with a strong preference for cleaving Lys 6- and Lys 11-linked multimers. USP30 can be ubiquitinated by parkin (PARK2) at Lys-235 and Lys-289. USP30 inhibition is potentially beneficial for treating Parkinson disease by promoting mitochondrial clearance and quality control. USP30 was detected 67 kDa by ubiquitination (PMID: 34704599).

Notable Publications

Author	Pubmed ID	Journal	Application
Hideki Ikeda	39843734	Nature	IF
Yang Wu	37300943	Biochem Biophys Res Commun	WB,IF

Storage

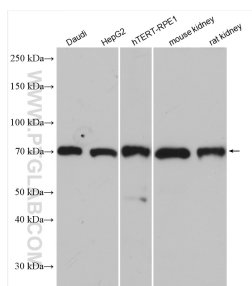
Storage:
Store at -20°C. Stable for one year after shipment.
Storage Buffer:
PBS with 0.02% sodium azide and 50% glycerol pH 7.3.
Aliquoting is unnecessary for -20°C storage

*** 20ul sizes contain 0.1% BSA

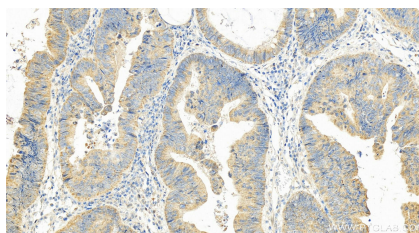
For technical support and original validation data for this product please contact:
T: 1 (888) 4PTGLAB (1-888-478-4522) (toll free in USA), or 1(312) 455-8498 (outside USA)
E: proteintech@ptglab.com
W: ptglab.com

This product is exclusively available under Proteintech Group brand and is not available to purchase from any other manufacturer.

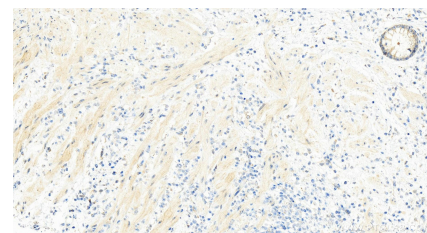
Selected Validation Data



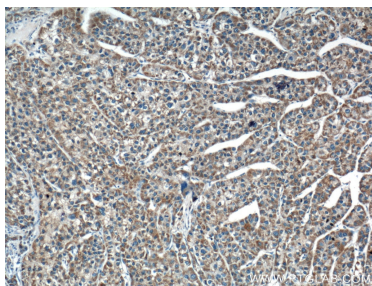
Various lysates were subjected to SDS PAGE followed by western blot with 15402-1-AP (USP30 antibody) at dilution of 1:1000 incubated at room temperature for 1.5 hours.



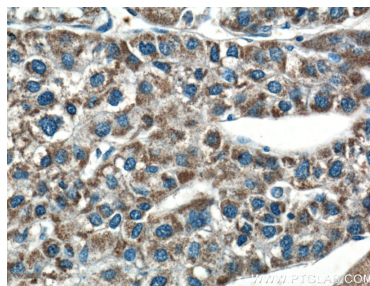
Immunohistochemical analysis of paraffin-embedded human colon cancer tissue slide using 15402-1-AP (USP30 antibody) at dilution of 1:1600 (under 20x lens). Heat mediated antigen retrieval with Tris-EDTA buffer (pH 9.0).



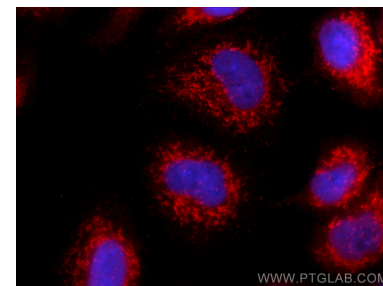
Immunohistochemical analysis of paraffin-embedded human colon cancer tissue slide using 15402-1-AP (USP30 antibody) at dilution of 1:1600 (under 20x lens). Heat mediated antigen retrieval with Tris-EDTA buffer (pH 9.0).



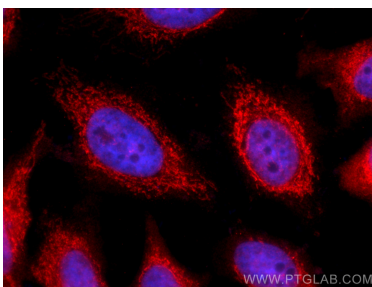
Immunohistochemical analysis of paraffin-embedded human liver cancer tissue slide using 15402-1-AP (USP30 antibody) at dilution of 1:200 (under 10x lens).



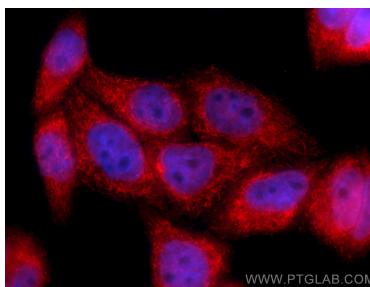
Immunohistochemical analysis of paraffin-embedded human liver cancer tissue slide using 15402-1-AP (USP30 antibody) at dilution of 1:200 (under 40x lens).



Immunofluorescent analysis of (4% PFA) fixed A549 cells using USP30 antibody (15402-1-AP) at dilution of 1:400 and CoraLite®594-Conjugated Goat Anti-Rabbit IgG(H+L) (SA00013-4).



Immunofluorescent analysis of (4% PFA) fixed HeLa cells using USP30 antibody (15402-1-AP) at dilution of 1:400 and CoraLite®594-Conjugated Goat Anti-Rabbit IgG(H+L) (SA00013-4).



Immunofluorescent analysis of (4% PFA) fixed HepG2 cells using USP30 antibody (15402-1-AP) at dilution of 1:400 and CoraLite®594-Conjugated Goat Anti-Rabbit IgG(H+L) (SA00013-4).