

For Research Use Only

ATP5E Polyclonal antibody

Catalog Number: 15408-1-AP



Basic Information

Catalog Number: 15408-1-AP	GenBank Accession Number: BC001690	Purification Method: Antigen affinity purification
Size: 150ul , Concentration: 550 µg/ml by Nanodrop;	GeneID (NCBI): 514	Recommended Dilutions: WB 1:1000-1:4000 IF 1:200-1:800
Source: Rabbit	Full Name: ATP synthase, H ⁺ transporting, mitochondrial F1 complex, epsilon subunit	
Isotype: IgG	Calculated MW: 6 kDa	
Immunogen Catalog Number: AG7672	Observed MW: 6 kDa	

Applications

Tested Applications: IF, WB, ELISA	Positive Controls:
Species Specificity: mouse, human	WB : mouse heart tissue, 37°C incubated mouse heart tissue IF : HeLa cells,

Background Information

ATP synthase epsilon subunit (ATP5E) is an important subunit of ATP synthase, which is located in the stalk region of the F1 sector. F1-ATPase is the catalytic portion of mitochondrial ATP synthase, which produces ATP from ADP and inorganic phosphate (Pi). ATP5E is widely expressed in tissues. The calculated molecular weight of ATP5E is 6 kDa (PMID: 36625260).

Storage

Storage:
Store at -20°C. Stable for one year after shipment.
Storage Buffer:
PBS with 0.02% sodium azide and 50% glycerol pH 7.3.
Aliquoting is unnecessary for -20°C storage

***** 20ul sizes contain 0.1% BSA**

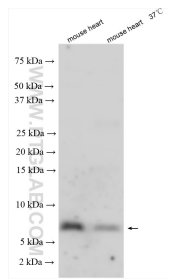
For technical support and original validation data for this product please contact:

T: 1 (888) 4PTGLAB (1-888-478-4522) (toll free in USA), or 1(312) 455-8498 (outside USA)

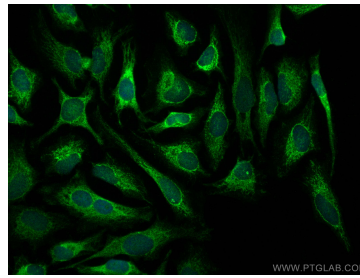
E: proteintech@ptglab.com
W: ptglab.com

This product is exclusively available under Proteintech Group brand and is not available to purchase from any other manufacturer.

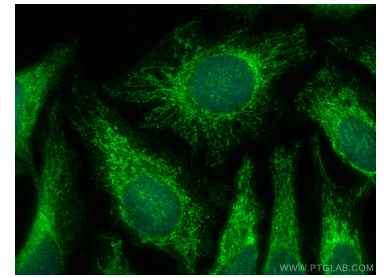
Selected Validation Data



Boiled and 37°C incubated mouse heart tissue were subjected to SDS PAGE followed by western blot with 15408-1-AP (ATP5E antibody) at dilution of 1:2000 incubated at room temperature for 1.5 hours.



Immunofluorescent analysis of (4% PFA) fixed HeLa cells using ATP5E antibody (15408-1-AP) at dilution of 1:400 and CoraLite®488-Conjugated AffiniPure Goat Anti-Rabbit IgG(H+L).



Immunofluorescent analysis of (4% PFA) fixed HeLa cells using ATP5E antibody (15408-1-AP) at dilution of 1:400 and CoraLite®488-Conjugated AffiniPure Goat Anti-Rabbit IgG(H+L).