

For Research Use Only

NUBP2 Polyclonal antibody

Catalog Number: 15409-1-AP

3 Publications



Basic Information

Catalog Number:

15409-1-AP

Size:

150ul, Concentration: 200 ug/ml by Nanodrop and 200 ug/ml by Bradford method using BSA as the standard;

Source:

Rabbit

Isotype:

IgG

Immunogen Catalog Number:

AG7676

GenBank Accession Number:

BC002768

GeneID (NCBI):

10101

UNIPROT ID:

Q9Y5Y2

Full Name:

nucleotide binding protein 2 (MinD homolog, E. coli)

Calculated MW:

29 kDa

Observed MW:

30-33 kDa

Purification Method:

Antigen affinity purification

Recommended Dilutions:

WB 1:1000-1:5000

IHC 1:20-1:200

IF/ICC 1:50-1:500

Applications

Tested Applications:

WB, IHC, IF/ICC, ELISA

Cited Applications:

WB, IHC

Species Specificity:

human, mouse, rat

Cited Species:

human, mouse

Note-IHC: suggested antigen retrieval with TE buffer pH 9.0; (*) Alternatively, antigen retrieval may be performed with citrate buffer pH 6.0

Positive Controls:

WB : HeLa cells, mouse pancreas tissue, L02 cells, U-251 cells, HepG2 cells, NIH/3T3 cells

IHC : human skeletal muscle tissue, human pancreas tissue

IF/ICC : L02 cells,

Notable Publications

Author	Pubmed ID	Journal	Application
Xiaorui Fan	35654137	J Biol Chem	WB
Nima N Naseri	32042150	Nat Struct Mol Biol	WB
Danfeng Lan	38492158	Mol Cell Biochem	WB,IHC

Storage

Storage:

Store at -20°C. Stable for one year after shipment.

Storage Buffer:

PBS with 0.02% sodium azide and 50% glycerol pH 7.3.

Aliquoting is unnecessary for -20°C storage

*** 20ul sizes contain 0.1% BSA

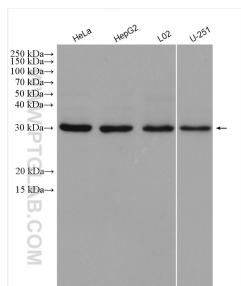
For technical support and original validation data for this product please contact:

T: 1 (888) 4PTGLAB (1-888-478-4522) (toll free in USA), or 1(312) 455-8498 (outside USA)

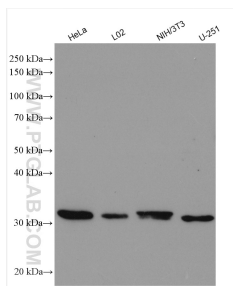
E: proteintech@ptglab.com
W: ptglab.com

This product is exclusively available under Proteintech Group brand and is not available to purchase from any other manufacturer.

Selected Validation Data



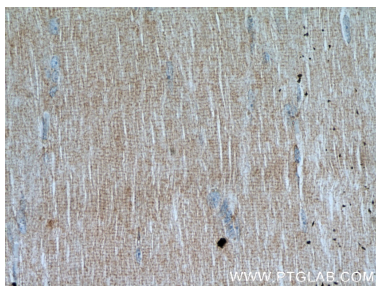
Various lysates were subjected to SDS PAGE followed by western blot with 15409-1-AP (NUBP2 antibody) at dilution of 1:2000 incubated at room temperature for 1.5 hours.



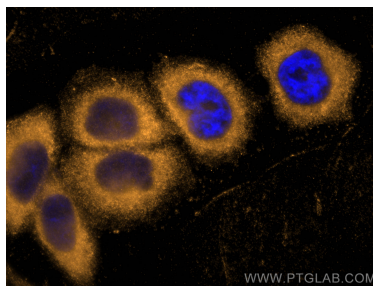
Various lysates were subjected to SDS PAGE followed by western blot with 15409-1-AP (NUBP2 antibody) at dilution of 1:2500 incubated at room temperature for 1.5 hours.



Immunohistochemical analysis of paraffin-embedded human skeletal muscle using 15409-1-AP (NUBP2 antibody) at dilution of 1:50 (under 10x lens).



Immunohistochemical analysis of paraffin-embedded human skeletal muscle using 15409-1-AP (NUBP2 antibody) at dilution of 1:50 (under 40x lens).



Immunofluorescent analysis of (-20°C Methanol) fixed L02 cells using NUBP2 antibody (15409-1-AP) at dilution of 1:200 and Cy3-conjugated Goat Anti-Rabbit IgG(H+L).