

For Research Use Only

# BTF3 Polyclonal antibody

Catalog Number: 15415-1-AP



## Basic Information

<b>Catalog Number:</b> 15415-1-AP	<b>GenBank Accession Number:</b> BC008062	<b>Purification Method:</b> Antigen affinity purification
<b>Size:</b> 150ul , Concentration: 450 ug/ml by Nanodrop;	<b>GeneID (NCBI):</b> 689	<b>Recommended Dilutions:</b> WB 1:1000-1:6000
<b>Source:</b> Rabbit	<b>UNIPROT ID:</b> P20290	<b>IHC 1:250-1:1000</b>
<b>Isotype:</b> IgG	<b>Full Name:</b> basic transcription factor 3	<b>IF/ICC 1:200-1:800</b>
<b>Immunogen Catalog Number:</b> AG7701	<b>Calculated MW:</b> 22 kDa	
	<b>Observed MW:</b> 18 kDa, 23 kDa	

## Applications

<b>Tested Applications:</b> WB, IHC, IF/ICC, ELISA	<b>Positive Controls:</b>
<b>Species Specificity:</b> human, mouse, rat	<b>WB :</b> A549 cells, HT-29 cells, HeLa cells, HuH-7 cells, RAW 264.7 cells
<b>Note-IHC: suggested antigen retrieval with TE buffer pH 9.0; (*) Alternatively, antigen retrieval may be performed with citrate buffer pH 6.0</b>	<b>IHC :</b> human colon cancer tissue,
	<b>IF/ICC :</b> HeLa cells,

## Background Information

Basic transcription factor 3 (BTF3), also known as nascent-polypeptide-associated complex (NAC) beta (NACB), belongs to the NAC-beta family. BTF3 serves as an oncogene and convey worse prognosis in gastric cancer, pancreatic cancer, osteosarcoma, cervical cancer, hypopharyngeal squamous cell carcinoma, prostate cancer, breast cancer. Due to alternative splicing, BTF3 is present in two different isoforms, BTF3a and BTF3b. BTF3a is the transcriptionally active form of BTF3, while the isoform lacking the first 44 amino acids of the BTF3a N-terminus, BTF3b, is transcriptionally inactive, two isoforms of BTF3, BTF3a and BTF3b corresponding to 23kDa and 18kDa(PMID: 23029305).

## Storage

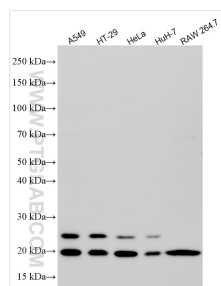
**Storage:**  
Store at -20°C. Stable for one year after shipment.  
**Storage Buffer:**  
PBS with 0.02% sodium azide and 50% glycerol pH 7.3.  
**Aliquoting is unnecessary for -20°C storage**

\*\*\* 20ul sizes contain 0.1% BSA

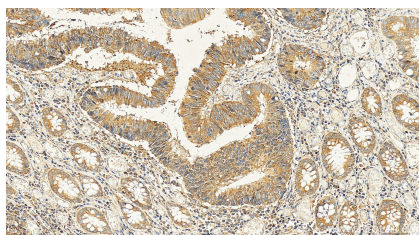
For technical support and original validation data for this product please contact:  
T: 1 (888) 4PTGLAB (1-888-478-4522) (toll free in USA), or 1(312) 455-8498 (outside USA)  
E: [proteintech@ptglab.com](mailto:proteintech@ptglab.com)  
W: [ptglab.com](http://ptglab.com)

This product is exclusively available under Proteintech Group brand and is not available to purchase from any other manufacturer.

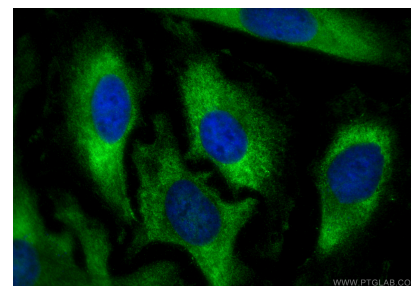
## Selected Validation Data



Various lysates were subjected to SDS PAGE followed by western blot with 15415-1-AP (BTF3 antibody) at dilution of 1:3000 incubated at room temperature for 1.5 hours.



Immunohistochemical analysis of paraffin-embedded human colon cancer tissue slide using 15415-1-AP (BTF3 antibody) at dilution of 1:500 (under 20x lens). Heat mediated antigen retrieval with Tris-EDTA buffer (pH 9.0).



Immunofluorescent analysis of (-20°C Ethanol) fixed HeLa cells using BTF3 antibody (15415-1-AP) at dilution of 1:400 and CoraLite®488-Conjugated Goat Anti-Rabbit IgG(H+L) (SA00013-2).