

For Research Use Only

BTF3 Polyclonal antibody, PBS Only

Catalog Number:15415-1-PBS



Basic Information

Catalog Number:

15415-1-PBS

Size:

100ug , Concentration: 1 mg/ml by Nanodrop;

Source:

Rabbit

Isotype:

IgG

Immunogen Catalog Number:

AG7701

GenBank Accession Number:

BC008062

GeneID (NCBI):

689

UNIPROT ID:

P20290

Full Name:

basic transcription factor 3

Calculated MW:

22 kDa

Observed MW:

18 kDa, 23 kDa

Purification Method:

Antigen affinity purification

Applications

Tested Applications:

WB, IHC, IF/ICC, Indirect ELISA

Species Specificity:

human, mouse, rat

Background Information

Basic transcription factor 3 (BTF3), also known as nascent-polypeptide-associated complex (NAC) beta (NACB), belongs to the NAC-beta family. BTF3 serves as an oncogene and convey worse prognosis in gastric cancer, pancreatic cancer, osteosarcoma, cervical cancer, hypopharyngeal squamous cell carcinoma, prostate cancer, breast cancer. Due to alternative splicing, BTF3 is present in two different isoforms, BTF3a and BTF3b. BTF3a is the transcriptionally active form of BTF3, while the isoform lacking the first 44 amino acids of the BTF3a N-terminus, BTF3b, is transcriptionally inactive, two isoforms of BTF3, BTF3a and BTF3b corresponding to 23kDa and 18kDa(PMID: 23029305).

Storage

Storage:

Store at -80°C.

Storage Buffer:

PBS Only

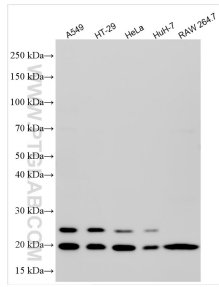
For technical support and original validation data for this product please contact:

T: 1 (888) 4PTGLAB (1-888-478-4522) (toll free in USA), or 1(312) 455-8498 (outside USA)

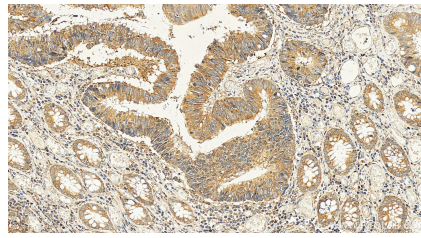
E: proteintech@ptglab.com
W: ptglab.com

This product is exclusively available under Proteintech Group brand and is not available to purchase from any other manufacturer.

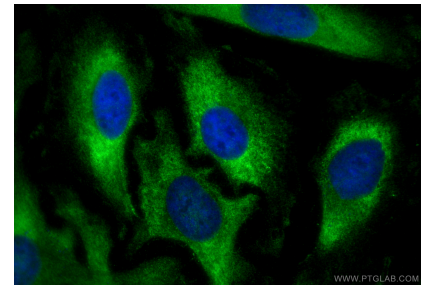
Selected Validation Data



Various lysates were subjected to SDS PAGE followed by western blot with 15415-1-AP (BTF3 antibody) at dilution of 1:3000 incubated at room temperature for 1.5 hours. This data was developed using the same antibody clone with 15415-1-PBS in a different storage buffer formulation.



Immunohistochemical analysis of paraffin-embedded human colon cancer tissue slide using 15415-1-AP (BTF3 antibody) at dilution of 1:500 (under 20x lens). Heat mediated antigen retrieval with Tris-EDTA buffer (pH 9.0). This data was developed using the same antibody clone with 15415-1-PBS in a different storage buffer formulation.



Immunofluorescent analysis of (-20°C Ethanol) fixed HeLa cells using BTF3 antibody (15415-1-AP) at dilution of 1:400 and CoraLite®488-Conjugated Goat Anti-Rabbit IgG(H+L) (SA00013-2). This data was developed using the same antibody clone with 15415-1-PBS in a different storage buffer formulation.