

For Research Use Only

# Bif-1 Polyclonal antibody

Catalog Number: 15422-1-AP **6 Publications**



## Basic Information

<b>Catalog Number:</b> 15422-1-AP	<b>GenBank Accession Number:</b> BC007455	<b>Purification Method:</b> Antigen affinity purification
<b>Size:</b> 150ul , Concentration: 600 ug/ml by Nanodrop and 293 ug/ml by Bradford method using BSA as the standard;	<b>GeneID (NCBI):</b> 51100	<b>Recommended Dilutions:</b> WB 1:500-1:2000 IHC 1:50-1:500 IF/ICC 1:200-1:800
<b>Source:</b> Rabbit	<b>UNIPROT ID:</b> Q9Y371	
<b>Isotype:</b> IgG	<b>Full Name:</b> SH3-domain GRB2-like endophilin B1	
<b>Immunogen Catalog Number:</b> AG7710	<b>Calculated MW:</b> 41 kDa	
	<b>Observed MW:</b> 41 kDa	

## Applications

**Tested Applications:**  
WB, IHC, IF/ICC, ELISA

**Cited Applications:**  
WB, IHC, IF, CHIP

**Species Specificity:**  
human, mouse, rat

**Cited Species:**  
human, mouse, rat

**Note-IHC: suggested antigen retrieval with TE buffer pH 9.0; (\*) Alternatively, antigen retrieval may be performed with citrate buffer pH 6.0**

**Positive Controls:**

**WB :** mouse kidney tissue, HEK-293 cells, human placenta tissue, mouse heart tissue, mouse placenta tissue

**IHC :** mouse kidney tissue, human kidney tissue, rat kidney tissue

**IF/ICC :** HepG2 cells,

## Background Information

SH3GLB1 also known as Bif-1, contains an N-terminal domain, a central coiled-coil region, and a C-terminal SH3 domain, but shares no significant homology with members of the Bcl-2 family. SH3GLB1 is involved in activation of caspase-dependent apoptosis by promoting BAX/BAK1 activation (PubMed:16227588).

## Notable Publications

Author	Pubmed ID	Journal	Application
Huixue Zhang	28977840	Oncotarget	WB
Chia-Hung Chien	35831908	J Exp Clin Cancer Res	WB
Anbo Gao	35487252	Eur J Pharmacol	WB,IHC

## Storage

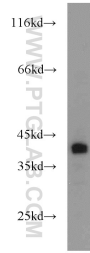
**Storage:**  
Store at -20°C. Stable for one year after shipment.  
**Storage Buffer:**  
PBS with 0.02% sodium azide and 50% glycerol pH 7.3.  
Aliquoting is unnecessary for -20°C storage

**\*\*\* 20ul sizes contain 0.1% BSA**

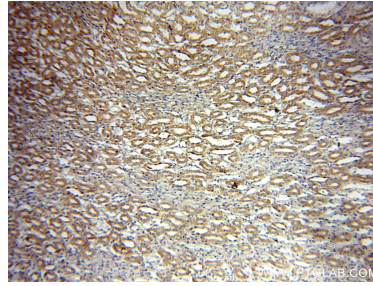
For technical support and original validation data for this product please contact:  
T: 1 (888) 4PTGLAB (1-888-478-4522) (toll free in USA), or 1(312) 455-8498 (outside USA) E: proteintech@ptglab.com W: ptglab.com

**This product is exclusively available under Proteintech Group brand and is not available to purchase from any other manufacturer.**

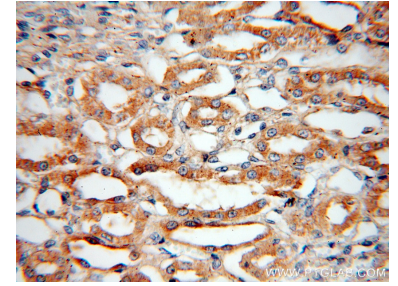
## Selected Validation Data



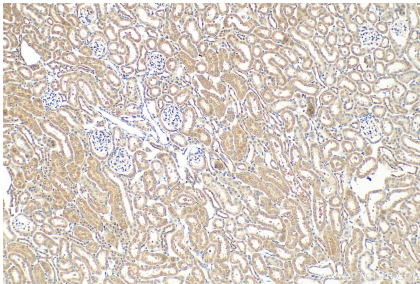
mouse kidney tissue were subjected to SDS PAGE followed by western blot with 15422-1-AP (Bif-1 antibody) at dilution of 1:1000 incubated at room temperature for 1.5 hours.



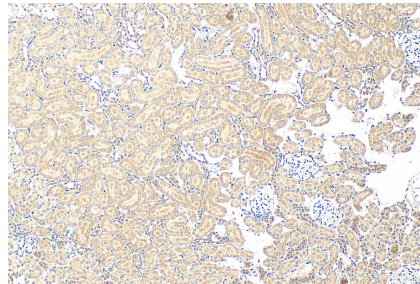
Immunohistochemical analysis of paraffin-embedded human kidney using 15422-1-AP (Bif-1 antibody) at dilution of 1:100 (under 10x lens).



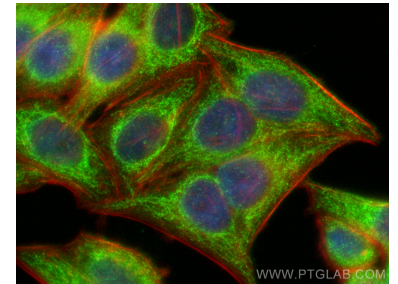
Immunohistochemical analysis of paraffin-embedded human kidney using 15422-1-AP (Bif-1 antibody) at dilution of 1:100 (under 40x lens).



Immunohistochemical analysis of paraffin-embedded mouse kidney tissue slide using 15422-1-AP (Bif-1 antibody) at dilution of 1:200 (under 10x lens). Heat mediated antigen retrieval with Tris-EDTA buffer (pH 9.0).



Immunohistochemical analysis of paraffin-embedded rat kidney tissue slide using 15422-1-AP (Bif-1 antibody) at dilution of 1:200 (under 10x lens). Heat mediated antigen retrieval with Tris-EDTA buffer (pH 9.0).



Immunofluorescent analysis of (4% PFA) fixed HepG2 cells using Bif-1 antibody (15422-1-AP) at dilution of 1:400 and Multi-rAb CoraLite® Plus 488-Goat Anti-Rabbit Recombinant Secondary Antibody (H+L) (RGAR002), CL594-phalloidin (red).