

For Research Use Only

CD300LG Polyclonal antibody

Catalog Number: 15426-1-AP



Basic Information

Catalog Number: 15426-1-AP	GenBank Accession Number: BC025395	Purification Method: Antigen affinity purification
Size: 150ul , Concentration: 750 ug/ml by Nanodrop and 313 ug/ml by Bradford method using BSA as the standard;	GeneID (NCBI): 146894	Recommended Dilutions: WB 1:500-1:2000 IF/ICC 1:50-1:500
Source: Rabbit	UNIPROT ID: Q6UXG3	
Isotype: IgG	Full Name: CD300 molecule-like family member	
Immunogen Catalog Number: AG8075	Calculated MW: 36 kDa	
	Observed MW: 36 kDa	

Applications

Tested Applications: WB, IF/ICC, ELISA	Positive Controls:
Species Specificity: human	WB : human kidney tissue, HepG2 cells IF/ICC : HEK-293 cells,

Background Information

CD300LG, also known as CLM9 (CMRF35-like molecule 9), is a member of the CD300 protein family. Members of this family are cell surface glycoproteins with a single IgV-like extracellular domain, and are involved in the regulation of immune response. CD300LG is a receptor which may mediate L-selectin-dependent lymphocyte rollings and may play an important role in inflammation.

Storage

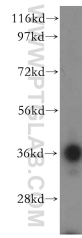
Storage:
Store at -20°C. Stable for one year after shipment.
Storage Buffer:
PBS with 0.02% sodium azide and 50% glycerol pH 7.3.
Aliquoting is unnecessary for -20°C storage

*** 20ul sizes contain 0.1% BSA

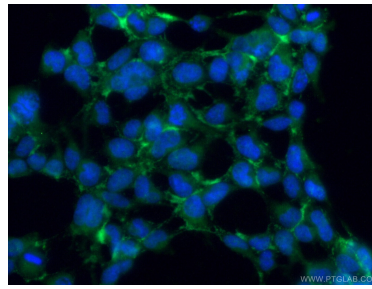
For technical support and original validation data for this product please contact:
T: 1 (888) 4PTGLAB (1-888-478-4522) (toll free in USA), or 1(312) 455-8498 (outside USA)
E: proteintech@ptglab.com
W: ptglab.com

This product is exclusively available under Proteintech Group brand and is not available to purchase from any other manufacturer.

Selected Validation Data



human kidney tissue were subjected to SDS PAGE followed by western blot with 15426-1-AP (CD300LG antibody) at dilution of 1:500 incubated at room temperature for 1.5 hours.



Immunofluorescent analysis of (-20°C Ethanol) fixed HEK-293 cells using 15426-1-AP (CD300LG antibody) at dilution of 1:50 and Alexa Fluor 488-conjugated AffiniPure Goat Anti-Rabbit IgG(H+L).