

For Research Use Only

CD300LG Polyclonal antibody, PBS Only

Catalog Number: 15426-1-PBS



Basic Information

| | | |
|---|--|--|
| Catalog Number: 15426-1-PBS | GenBank Accession Number: BC025395 | Purification Method: Antigen affinity purification |
| Size: 100ug , Concentration: 1 mg/ml by Nanodrop; | GeneID (NCBI): 146894 | |
| Source: Rabbit | UNIPROT ID: Q6UXG3 | |
| Isotype: IgG | Full Name: CD300 molecule-like family member | |
| Immunogen Catalog Number: AG8075 | Calculated MW: 36 kDa | |
| | Observed MW: 36 kDa | |

Applications

Tested Applications:
WB, Indirect ELISA

Species Specificity:
human

Background Information

CD300LG, also known as CLM9 (CMRF35-like molecule 9), is a member of the CD300 protein family. Members of this family are cell surface glycoproteins with a single IgV-like extracellular domain, and are involved in the regulation of immune response. CD300LG is a receptor which may mediate L-selectin-dependent lymphocyte rollings and may play an important role in inflammation.

Storage

Storage:
Store at -80°C.

Storage Buffer:
PBS only, pH7.3

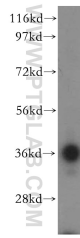
For technical support and original validation data for this product please contact:

T: 1 (888) 4PTGLAB (1-888-478-4522) (toll free in USA), or 1(312) 455-8498 (outside USA)

E: proteintech@ptglab.com
W: ptglab.com

This product is exclusively available under Proteintech Group brand and is not available to purchase from any other manufacturer.

Selected Validation Data



human kidney tissue were subjected to SDS PAGE followed by western blot with 15426-1-AP (CD300LG antibody) at dilution of 1:500 incubated at room temperature for 1.5 hours. This data was developed using the same antibody clone with 15426-1-PBS in a different storage buffer formulation.